

**VERTU
SEMI - AUTOMATIC
SHOTGUN**



• VERTU



**OWNER'S MANUAL
MAINTENANCE & PARTS LIST**

⚠ WARNING

SARSILMAZ disclaims any and all liability arising out of the use of any SARSILMAZ products (i) contrary to instructions or regulations; (ii) without caution; (iii) by any parties other than the license holder; (iv) through making unauthorized or illegal modifications thereon; (v) utilizing non-standard or out of spec cartridges; (vi) under maintenance or repair services rendered by unauthorized persons; or (vii) under any similar conditions whatsoever. SARSILMAZ excludes all liability for any injuries or property damages arising from the malicious or negligent use of products.

⚠ WARNING

All pictures, photos and definitions in this Manual are provided only for information purposes. Manufacturer reserves its right to apply changes to any models any time without prior notice as deemed necessary for improving the products or in line with any manufacturing or commercial requirements.

CONTENTS

1. GENERAL PRECAUTIONS	4	5. MAINTENANCE and CLEANING	20
2. GENERAL SAFETY RULES	5	5.1. HOW TO DISASSEMBLE YOUR SHOTGUN	20
3. PRODUCT OVERVIEW and FEATURES	10	5.2. MAINTENANCE and CLEANING OF YOUR SHOTGUN	23
3.1. CONTENT OF DELIVERY	10	5.3. HOW TO REASSEMBLE YOUR SHOTGUN	24
3.2. PRODUCT MAIN FEATURES	11	5.4. FUNCTION CONTROLS	24
3.3. OPERATING SYSTEM	11	5.5. INTENDED USE OF CHOKES	25
3.4. BASIC PARTS	12	5.6. HOW TO INSTALL AND UNINSTALL CHOKES	26
3.5. TECHNICAL DATA and FEATURES	13	5.7. HOW TO INSTALL AND UNINSTALL LIMITER PLUGS	27
4. PUTTING YOUR PRODUCT INTO SERVICE	14	5.8. STOCK ADJUSTMENT	28
4.1. PRELIMINARY PREPARATION	14	6. TROUBLESHOOTING	29
4.1.1. USE OF SAFETY	14	7. VERTU EXPLODED VIEW and PART LIST	30
4.2. HOW TO ASSEMBLE YOUR SHOTGUN	14	8. ASPECTS WHICH ARE CONSIDERED OUTSIDE THE SCOPE OF WARRANTY	32
4.3. AMMUNITION	15		
4.3.1. SHOOTING	16		
4.3.2. PRE-SHOOTING CONTROLS and SAFETY	16		
4.3.3. HOW TO LOAD YOUR SHOTGUN	17		
4.3.4. HOW TO CREATE A TARGET LINE	18		
4.3.5. SHOOTING	18		
4.3.6. HOW TO REPLACE CARTRIDGE	18		
4.3.7. HOW TO UNLOAD YOUR SHOTGUN	19		

1. GENERAL PRECAUTIONS

Read the instructions and warnings in this manual carefully before handling SARSILMAZ products for any purposes.

As a prerequisite putting SARSILMAZ products into service and the safety requirements in their use, cleaning and maintenance, you must be familiar with and follow exactly all information provided in this manual. Please do not use the product unless you read the instructions for safety and use thoroughly and carefully. If you need any further information please consult your dealer or the factory.

Please observe the laws of your region or your country governing the purchasing, handling and use of firearms.

All firearms are dangerous. Therefore, your product is sold to you provided that you comply with all instructions for use and SARSILMAZ disclaims in advance any and all responsibility for any technical damage or other consequences whatsoever that may be caused by the misuse of the product, including any harm or injury or property damage arising in relation to the following:

- Always keep the muzzle pointed in a safe direction.
- Firearms should be unloaded and secured when not actually in use.
- Do not rely on your firearm's safety.
- Be sure of your target and what's beyond it.
- Make sure that your ammunition matches the caliber or gauge of your gun.
- If your firearm fails to fire when the trigger is pulled, handle with care.
- It is your responsibility to ensure that you are in compliance with all applicable laws and ordinances regarding the use of your firearm.
- Other factors directly or indirectly beyond our control.

2. GENERAL SAFETY RULES

2.1. STRICTLY AVOID AIMING THE GUN IN AN UNSAFE DIRECTION.

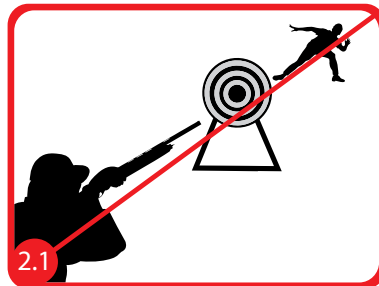
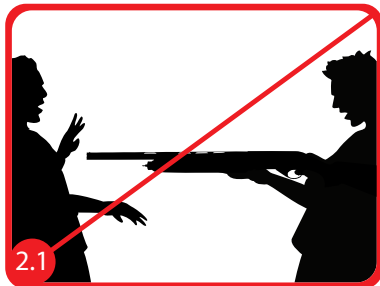
Do not direct the gun's muzzle toward other persons or towards any target you do not wish to destroy. This is significant particularly when you are loading and unloading the gun. When you shoot at a target, be careful about what is behind the target. If you miss or hit the target, ensuring that the shoot does not lead to an unexpected injury or damage is your responsibility.

2.2. ALWAYS ACT AS IF THE GUN IS LOADED.

Never assume that the gun is empty. Open the action and visually ensure the chamber is empty as well as the magazine tube. Always follow the instructions as outlined in this manual for safe operation. Read the manual entirely and thoroughly in order to understand the proper and safe use and operation of your firearm.

2.3. HIDE YOUR RIFLE SO THAT CHILDREN DON'T HAVE ANY ACCESS

Access to your firearm by children under the age of 18 or any other unauthorized person is your responsibility. Please unload your gun in order to reduce the risk of accidents involving children. Lock the rifle and keep the ammunition locked in a separate place.



2.4. DO NOT SHOOT AT WATER OR A HARD SURFACE.

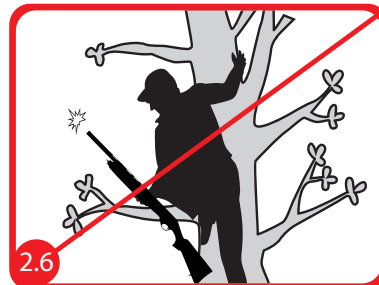
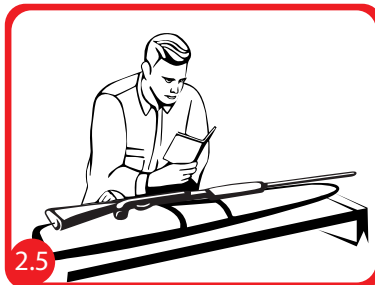
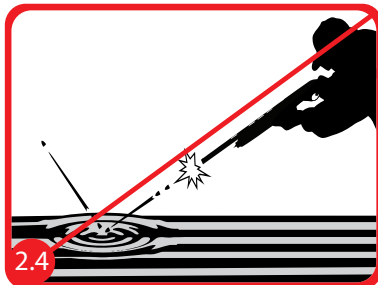
Shooting at water or a hard surface may cause the shot to change direction unexpectedly, as a result of which you or people around you might get injured.

2.5. KNOW THE SAFETY FEATURES OF THE GUN YOU ARE USING; HOWEVER, DO NOT FORGET THAT SAFETY DEVICES CAN NOT TAKE THE PLACE OF SAFE USAGE PROCEDURES.

Do not rely solely on the safety in terms of preventing accidents. It is essential that you know the safety features of the gun you are using; accidents can be prevented best by complying with the safety rules and safe usage procedures defined in the product manual. Accidents are always a result of not complying with basic safety rules.

2.6. NEVER CLIMB A TREE, FENCE OR OTHER OBSTACLE WITH A LOADED GUN.

Before climbing up or down a tree or climbing a fence or attempting to climb up or down any obstacle, open your gun, unload the magazine and lock the hand safety. Never use your firearm inappropriately. It is unsafe to push anyone or anything with your firearm or to use your firearm as a handhold to assist others.



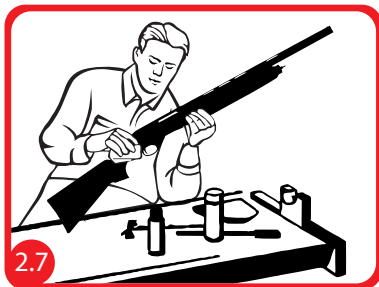
2.7. PROPER MAINTENANCE OF YOUR GUN.

Keep your gun in its bag so that dirt or dust does not accumulate on the operating parts. Clean and lubricate your gun in accordance with the instructions in the use manual in order to prevent barrel damage and contamination, since you will need to use it in case of emergency. Always make sure that the barrel is clean (purged of dirt, mud, oil, magazine, magazine residue) before loading the barrel. Firing the gun despite the clogging might cause the barrel to swell and you or people near you to get injured.

If you hear a strange sun when you fire the gun, stop the shooting operation immediately, activate the safety and unload the gun. Make sure that chamber and the barrel is not clogged, and the magazine is not stuck in the gun due to use of incorrect or improper ammunition.

2.8. ALWAYS WEAR SAFETY GOGGLES AND HEADPHONES.

Back blast of gas, gun powder and metal parts and their injuring the shooter is an improbable possibility, but injuries that occur in such cases that cover visual loss are serious. The shooter must always use an impact-resistant shooting goggle when firing the gun. The goggles will help to minimize the vision damage that may stem from the shooting process.

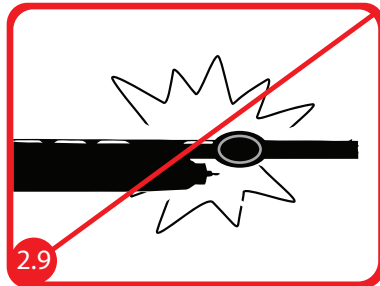


2.9. USE PROPER AMMUNITION.

Only use factory filled, industrial type, newly manufactured ammunition. Make sure ammunition you use is in accordance with the gauge and type of your firearm. The gauge of your firearm is clearly specified on the barrel. Refilled or remanufactured ammunition might increase the potential chamber pressure, cartridge head space and other defects, which might damage your gun, injure you or people around you. Do not use ammunition not specifically made to be compatible with your firearm. This poses a danger for the shooter as well as the gun.

2.10. AVOID CONSUMING ALCOHOLIC DRINKS OR DRUGS BEFORE SHOOTING.

Do not shoot the gun after consuming alcohol. Never use your firearm while under the effects of drugs or any other substance which may impair your ability to make intelligent safety decisions.

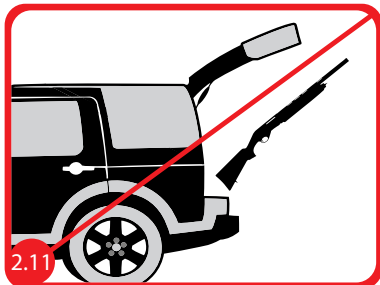


2.11. DO NOT TRANSPORT THE GUN WHEN IT IS LOADED.

Unload the shotgun before putting it in a car. (chamber AND magazine are empty). Hunters and target shooters must load their shotguns when they reach their destinations. If you are carrying a gun for self-protection purposes, keep the chamber empty to avoid accidental discharge.

2.12. MAKE SURE YOU KNOW THE OPERATION MODES OF THE SHOTGUN VERY WELL BEFORE USING OR LOADING IT.**2.13. THE SHOTGUN MUST BE REPAIRED ONLY BY AUTHORIZED REPAIR SERVICES.****2.14. MAKING MECHANICAL MODIFICATIONS ON THE PARTS OF THE SHOTGUN IS DANGEROUS AND PROHIBITED. DO NOT FORGET THAT PRODUCTS SUBJECTED TO SUCH OPERATIONS WILL BE OUTSIDE THE WARRANTY SCOPE.****2.15. THE PERSON USING THE SHOTGUN MUST BE AT 2 METERS DISTANT TO OTHER CLOSE BY OBSERVERS MINIMUM.**

The person using the shotgun must be 2 meters distant to other persons minimum for safety reasons. When carrying your shotgun, always keep the muzzle pointed in a safe direction.



3. PRODUCT OVERVIEW and FEATURES

3.1. CONTENT OF DELIVERY

Parts and included accessories:

- 1 x Shotgun case
- 1 x Shotgun
- 1 x User and Maintenance Manual
- 1 x Limiter Plug
- 5 x Chokes (delivered with 1 choke installed)
- 1 x Choke Key
- 2 x Sling Eyelets
- 4 x Stock Adjustment Shims
- 1 x Sling



3.2. PRODUCT MAIN FEATURES

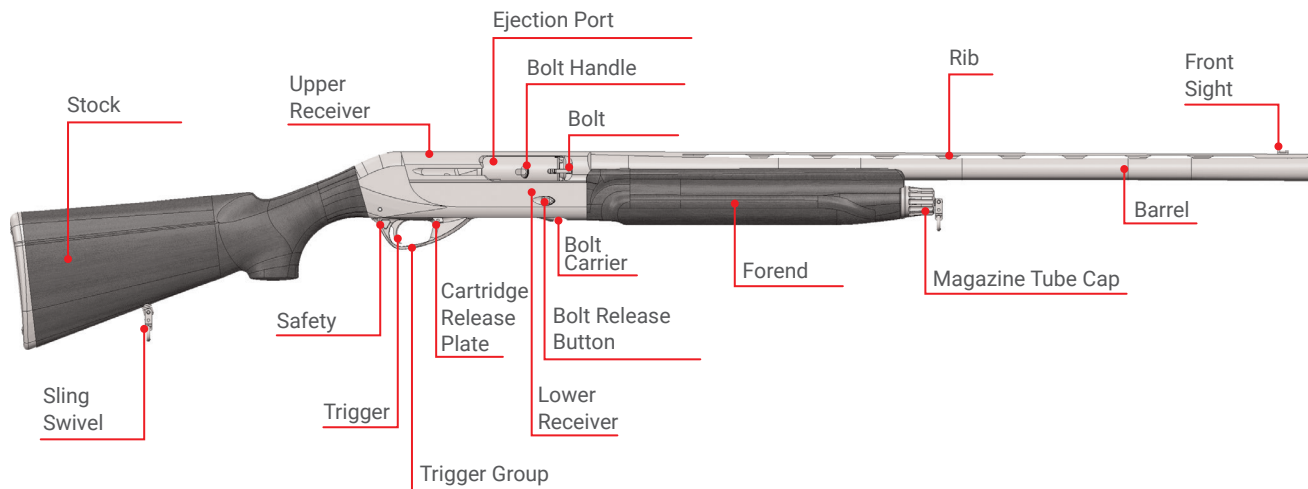
Sarsilmaz shotguns are manufactured according to state-of-the-art technology with the vast experience in manufacturing of modern light arms intended for shooting sports, police, army, and civilians. Your shotgun has a semiautomatic operating mechanism, and is driven by kinetic energy. You can safely carry your shotgun thanks to its safety system. With ergonomic buttstock and forend, it is possible to precisely locate the target, aim and shoot conveniently. Your shotgun is highly reliable and handy thanks to its operating system and its lightweight, aesthetic, and quality features.

***** Service life of our products is 10 years.

3.3. OPERATING SYSTEM

Your shotgun is driven by kinetic energy resulting from cartridge pressure. When the firearm is fired, the resulting kinetic energy compresses the pressure spring between the Bolt and the Locking Head. The energy generated on the spring discharges, and unlocks the lock mechanism as a result of which the bolt moves back. The empty cartridge is ejected as the bolt moves back. The bolt that moved back starts to move forward and close as the return spring compresses during which the new cartridge waiting on the carrier is chambered. The locking mechanism engages, and thus the cycle is complete. Your shotgun's operating system has a simple and reliable structure.

3.4. BASIC PARTS



3.5. TECHNICAL DATA and FEATURES

MODEL	VERTU
GAUGE	12 GA
MECHANISM	Semi Automatic - KINETIC
CHAMBER	3" - 76 mm
CAPACITY	4+1
BARREL LENGTH	24" - 61 cm 26" - 66 cm 28" - 71 cm
OVERALL LENGTH	44.8" - 114 cm 46.8" - 119 cm 48.8" - 124 cm
OVERALL HEIGHT	7.3" - 18.5 cm
OVERALL WIDTH	1.7" - 4.4 cm
WEIGHT	102.3 oz - 2900 g 103.7 oz - 2940 g 105.1 oz - 2980 g
SPECIFICATIONS	Aluminium Alloy Frame Walnut Stock and Forend Fiber Optic Front Sight

4. PUTTING YOUR PRODUCT INTO SERVICE

4.1. PRELIMINARY PREPARATION

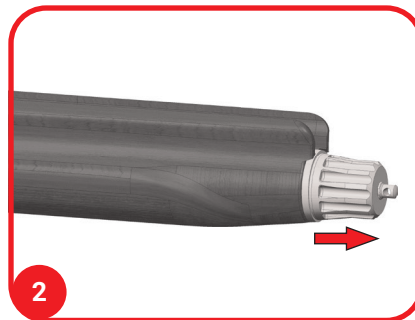
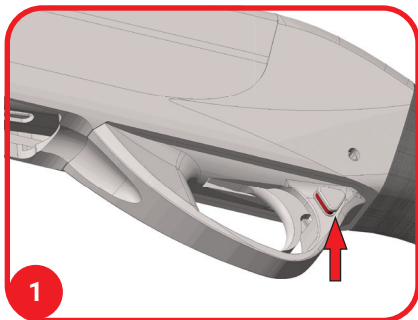
4.1.1. USE OF SAFETY

The manually operated safety button is on the trigger guard. This button, which can move left and right, activates or inactivates the safety mechanism. When you see a red mark on the button, it means the shotgun is ready to fire. (Figure 1)

4.2. HOW TO ASSEMBLE YOUR SHOTGUN

In the packaging, the shotgun's barrel is placed separately from the stock and receiver group. Please assemble the barrel as follows:

- Check the barrel. Make sure cartridge chamber and the barrel bore are clean and free of any obstruction.
- Turn the magazine tube cap counter clockwise to remove the cap. Then disassemble the forend. (Figure 2)
- Install the barrel. When installing, make sure the action shaft at the end of bolt fits into the action shaft housing.



inside the lower receiver, the upper receiver fits into the housing in the lower receiver, and the barrel fastening ring fits over the threaded magazine tube. Make sure the barrel completely fits into the lower receiver. **(Figure 3)**

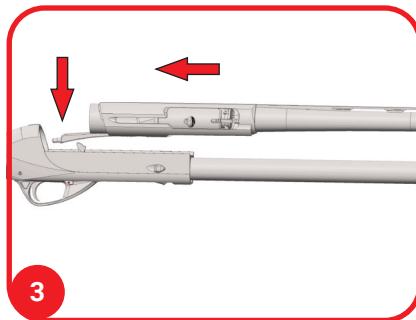
d. Fix the forend on the magazine tube, making sure it perfectly fits in its housing in the lower receiver.

e. Turn the magazine tube cap clockwise until hand tightened only.

f. Pull and release the bolt a couple of times using the bolt handle. Check the magazine tube cap. If there is a gap resulting from insufficient tightening, tighten the cap so that there is no such gap. Switch the safety to "on" position.

4.3. AMMUNITION

- Only use original and good quality cartridges.
- Only use cartridges that comply with your shotgun's gauge. Your shotgun is designed with a 76mm 3" cartridge chamber suitable for 12 gauge cartridge.
- You can use with your shotgun any cartridges ranging from 28 grams to 52 grams.
- Please note that use of shotguns with any hand-loaded or other nonstandard cartridges will lead to the shotgun being excluded from the warranty coverage.



4.3.1. SHOOTING

4.3.2. PRE-SHOOTING CONTROLS and SAFETY

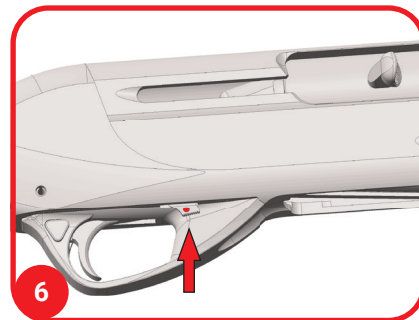
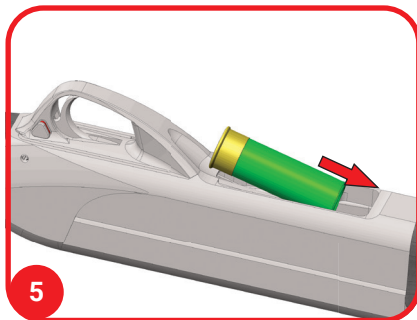
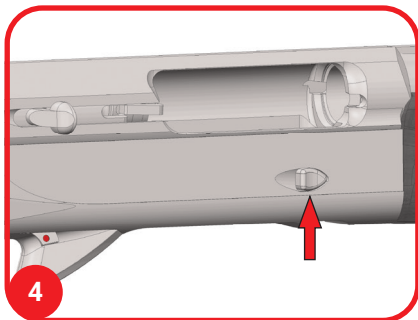
- Always point your shotgun in a safe direction.
- When you hold your shotgun. Keep your finger on the trigger guard, not the trigger
- Check the barrel bore to make sure there is no foreign object in the bore.
- Before loading, clean excessive lubricants from your shotgun, if any.
- Never load and unload your shotgun in a car, inside a building, in narrow and restricted areas (excluding the shooting ranges).
- Safety rules are intended to ensure that you use your shotgun safely.

⚠ WARNING

- A foreign object inside the barrel may lead to swelling of barrel or other damage, as well as injure the shooter or other people. In order to prevent any possible damages during shooting, make sure that people around you are a safe distance behind you.
- Always use eye and ear protection during shooting. Please also warn people near you to do the same.
- In case there is a cartridge or foreign object stuck inside the barrel, stop firing and remove empty cartridge. Never try to get it out by firing a second cartridge.
- Do not point your shotgun anywhere other than the target until you fully finish all shots.
- A shotgun user's most important responsibility is that the user should check the cartridge chamber once he/she finishes his/her shots.

4.3.3. HOW TO LOAD YOUR SHOTGUN

- a. Ensure the shotgun safety is on.
- b. Ensure the muzzle remains pointed in a safe direction.
- c. Pull the bolt handle back to the fullest extent, and then release it. If the bolt remains locked at the back, press the carrier retainer button on the right side of the lower receiver to ensure that the bolt moves forward and closes, in which case the carrier under the receiver will be released (**Figure 4**)
- d. Push the cartridges into the magazine tube through the carrier. Repeat that process until the magazine tube is fully loaded. (**Figure 5**)
- e. Press the cartridge release plate on the bottom part of the shotgun to ensure that the cartridge drops on the carrier. (**Figure 6**)
- f. In order to ensure that the cartridge on the carrier is chambered, pull the bolt handle back to the fullest extent, and then release it.
- g. You can load another cartridge into the magazine tube.
- h. Your shotgun is now ready for firing.



4.3.4. HOW TO CREATE A TARGET LINE

Create the target line by aligning the upper rib and the front sight. **(Figure 7)**

⚠ WARNING

Even if your shotgun is unloaded, please do not pull the trigger before taking safety measures.

4.3.5. SHOOTING

- Switch the manual safety to firing position.
- Point your shotgun to the target, and take aim.
- Put your finger on the trigger, and pull slowly.
- Your shotgun has a semi-automatic mechanism so the shotgun will eject the used cartridge, and chamber a new cartridge from the magazine tube.
- Your shotgun is now ready for a second shot. You can pull the trigger and continue firing.

4.3.6. HOW TO REPLACE CARTRIDGE

This process should be performed when the shotgun safety is on, and the barrel is pointed toward a safe direction.

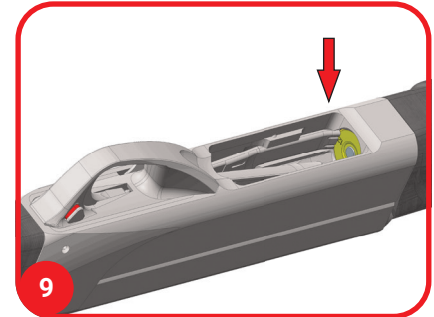
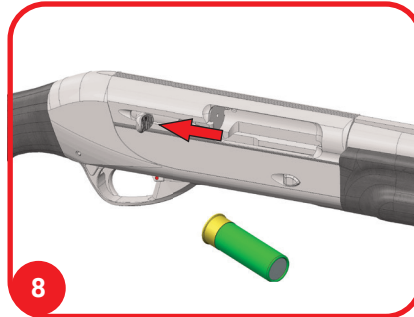
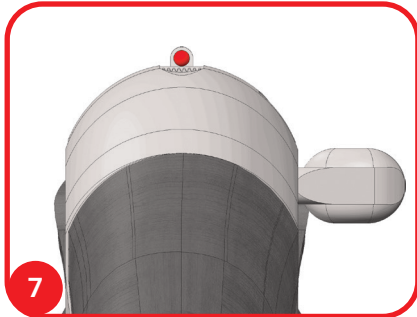
- a. Press and hold the carrier retainer button, pull the bolt handle, and eject the cartridge in the barrel.
- b. Keep on holding the carrier retainer button or do not release the bolt handle.
- c. Place the new cartridge in through the ejection port.
- d. Release the carrier retainer button or release the bolt handle.
- e. The new cartridge is now chambered.

4.3.7. HOW TO UNLOAD YOUR SHOTGUN

In order to eject full cartridges from the shotgun, make sure that the shotgun safety is on, and the barrel is pointed toward a safe direction.

First Method:

- a. Pull the bolt handle and eject the cartridge in the cartridge chamber. **(Figure 8)**
- b. Release the bolt handle, and make sure the bolt is closed.
- c. Turn the shotgun so that its bottom part faces up, and then press the carrier downward using index finger of your right hand.
- d. With index finger of your left hand, press the front part of carrier retainer to ensure that the cartridge is ejected. **(Figure 9)**
- e. Repeat this process until no cartridge is left in the magazine tube.



Second Method:

- a. Pull the bolt handle, and eject the cartridge in the cartridge chamber.
- b. Release the bolt handle, and make sure the bolt is closed.
- c. Press the cartridge release plate to ensure that a cartridge drops on the carrier.
- d. Pull and release the bolt handle to chamber the cartridge.
- e. When you pull and release the bolt handle again, the cartridge in the barrel will be ejected.
- f. You can eject all cartridges by repeating these steps.

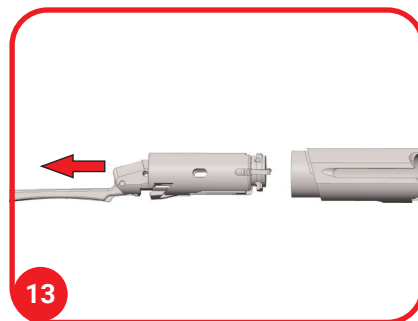
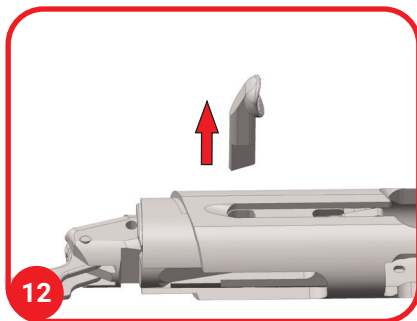
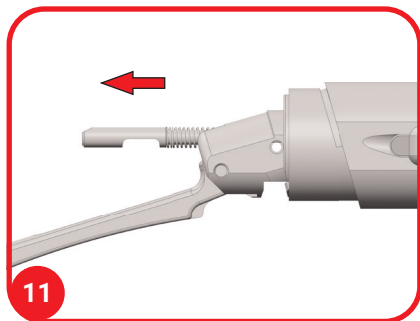
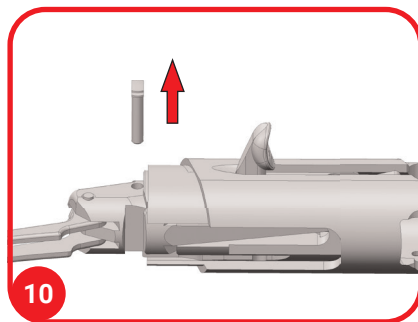
5. MAINTENANCE and CLEANING

5.1. HOW TO DISASSEMBLE YOUR SHOTGUN

Before disassembling your shotgun, please unload the cartridge chamber and the magazine tube.

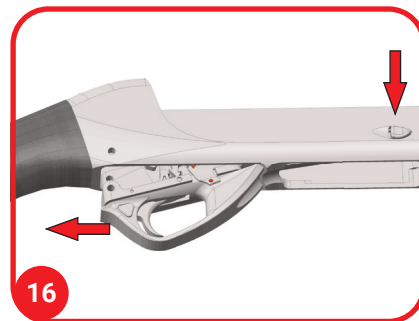
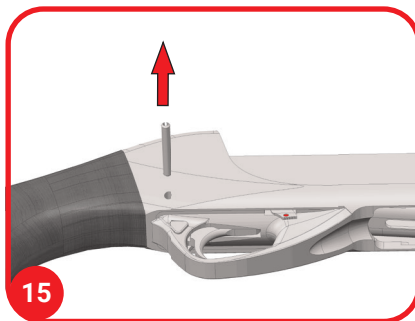
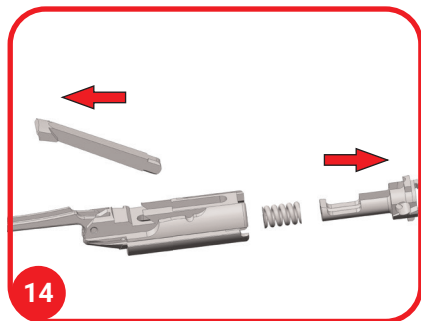
- a. Disassemble the magazine tube cap, and then remove the forend.
- b. Disassemble the barrel from the receiver.

- c. Pull the action shaft to bring the bolt to the rearmost position.
- d. Pull and remove the fixing pin on the bolt. **(Figure 10)**
- e. The pin will come out once you press and release it. Remove the pin and its spring. **(Figure 11)**
- f. Pull and remove the bolt handle. **(Figure 12)**
- g. Pull the action shaft and remove the bolt. **(Figure 13)**



- a. Remove the bolt lock. **(Figure 14)**
- b. Remove the locking head.
- c. Remove the bolt pressure spring.
- d. Remove the fixing pin of trigger group with the help of another pin. **(Figure 15)**
- e. Press and hold the carrier retainer button, and then pull and remove the trigger group. **(Figure 16)**

IT IS NOT RECOMMENDED THAT YOU FURTHER DISASSEMBLE THE SHOTGUN FURTHER DISASSEMBLY SHOULD BE PERFORMED BY AN AUTHORIZED SERVICE PROVIDER ONLY.



5.2. MAINTENANCE and CLEANING OF YOUR SHOTGUN

It is very important to be well-informed about the maintenance and cleaning of your shotgun. Experiences have shown that most of the problems that occur during use of the shotgun stem from maintenance errors or lack of maintenance. It is essential to attach particular importance to cleaning, lubrication, and protection of your shotgun for it to function appropriately. Exterior parts are subject to it atmospheric corrosion. It is recommended that you protect your shotgun by cleaning and lubricating your shotgun.

After using your shotgun, thoroughly clean the dirt, combustion residues, and oil that form on the external parts. Pull back the bolt group; using a cleaning rod, clean the internal part of the barrel until combustion residues are completely eliminated, then dry it, and lubricate with shotgun grade lubricant. Firing mechanisms of your shotgun such as trigger, hammer, pin, etc. may be contaminated with power residues. Make sure that you clean and lubricate such when parts periodically the shotgun will not be used for a long time, in particular at the end of the hunting season, otherwise, completely disassemble the shotgun. Clean and lubricate every accessible part of the shotgun. Cleaning should be performed with a soft brush by immersed in lubricant. Do not use corrosive and metal objects for cleaning. Make sure that all powder residues are completely cleaned. The cartridge chamber, barrel, and bolt group will be more contaminated with powder residues after firing and such parts should be cleaned and lubricated thoroughly. When storing your shotgun, make sure the bolt group is closed, and the shotgun is un-cocked.

⚠ WARNING

Never use animal and vegetable oils for maintenance and cleaning of your shotgun. Please only use shotgun grade lubricant.

5.3. HOW TO REASSEMBLE YOUR SHOTGUN

- a. After cleaning and lubricating the trigger group, press the carrier retainer button, and first insert the front part into the receiver in an angular position, and then align the trigger group pin hole at the back with the receiver pin hole.
- b. Install the trigger group fixing pin.
- c. Install the bolt pressure spring.
- d. Install the locking head.
- e. Install the bolt lock.
- f. Insert the bolt into the upper receiver.
- g. Install the bolt handle.
- h. Install the pin and its spring. The pin fixing channel should face the underside of the receiver.
- i. Install the pin fixing part.
- j. Install the barrel. When installing, make sure the action shaft at the end of bolt fits into the action shaft housing inside the lower receiver, the upper receiver fits into the housing in the lower receiver, and the barrel fastening ring fits into the connecting screw on the magazine tube. Make sure that the barrel completely fits into the lower receiver.
- k. Fix the forend on the magazine tube, making sure that it perfectly fits in its housing in the lower receiver.
- l. Turn the magazine tube cap clockwise to fix it in place.
- m. Pull and release the bolt a couple of times using the bolt handle. Check the magazine tube cap. If there is a gap resulting from insufficient tightening, tighten the cap so there is no such gap. Switch the safety to "on" position.

5.4. FUNCTION CONTROLS

If the bolt group opens and closes easily, then it means you smoothly finished reassembling your shotgun without any problem.

5.5. INTENDED USE OF CHOKES

Chokes are mounted in the muzzle to constrict the shot string. "Full" choke allows the shot string to remain tighter for shooting at longer distances, while "Cylinder" choke is to be used for shooting at the shortest distances. You may replace chokes depending on the type of game you wish to hunt.

⚠ WARNING: Use slug cartridges with cylinder (*****) choke-fitted barrels. If a slug cartridge is used with barrels which are fitted with other types of chokes, you may damage your shotgun and injure yourself.

⚠ WARNING: Before firing steel shot cartridges with your shotgun, make sure that chokes are marked 'steel shot.' Otherwise you might damage your shotgun and the chokes.

In order to identify the chokes in the barrel, look at the notches on their sides. The number of notches indicates the number of stars of the choke.

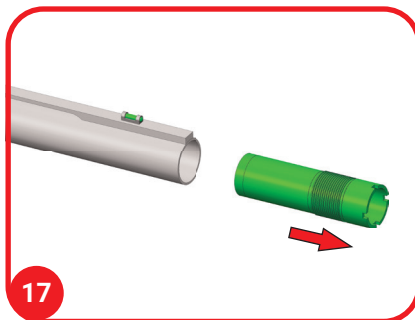
CHOKE MARKS	DESCRIPTION	USAGE
★	F (Full)	Used for long-range. Duck, goose hunts, such as the water hunt is used.
★★	IM (Improved Modified)	Used for long-range. Partridges, rabbits and etc.
★★★	M (Modified)	Used for medium-range. Woodcock, pheasant, quail, partridge etc.
★★★★	IC (Improved Cylinder)	Used for short-range. Quail, Golden Oriole, turtle doves etc.
★★★★★	Cylinder	Used for very short-range.

5.6. HOW TO INSTALL AND UNINSTALL CHOKES

Before installing and uninstalling chokes, empty your shotgun's cartridge chamber and magazine tube, and bring the safety of your shotgun to 'on' position.

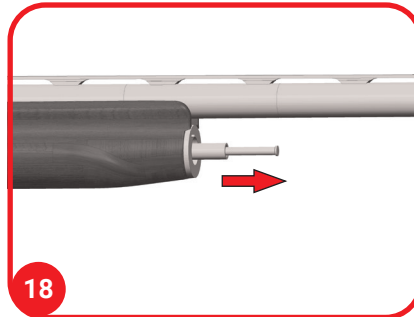
- a. Remove the choke by turning it anti-clockwise using the choke key. **(Figure 17)**
- b. Clean the threads of the choke and the barrel. Do not use a hard object for cleaning (you may use a brush). Then lubricate with shotgun grade lubricant. In order to prevent corrosion, it is important to uninstall, clean, lubricate, and reinstall the choke after each shooting period.
- c. To reinstall, tighten the choke by turning it clockwise to the last thread, making sure that there is no gap. When the choke is reinstalled correctly, there should be no protrusion from the muzzle.

⚠ WARNING: Never fire your shotgun without a choke being installed. Otherwise choke threads will be destroyed, and no choke can be installed until it is repaired.



5.7. HOW TO INSTALL AND UNINSTALL LIMITER PLUGS

- a. Your shotgun's magazine capacity is limited to 2 cartridges with the use of a limiter plug. Before uninstalling the limiter plug, make sure your shotgun is fully unloaded.
- b. Remove the magazine tube cap.
- c. Pull and remove the limiter plug. **(Figure 18)**
- d. Reinstall the magazine tube cap



5.8. STOCK ADJUSTMENT

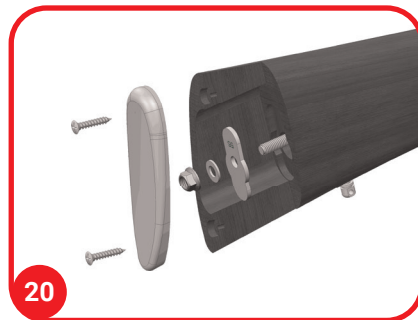
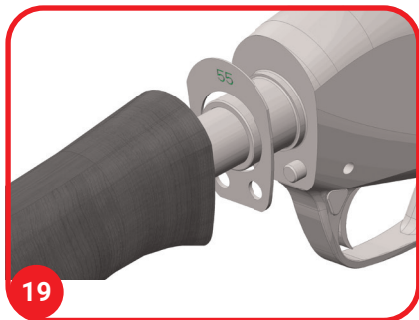
Adjustment shims and tightening adjusters provided with your shotgun enable upward and downward stock movement. Stock adjustment should be performed by the user as the adjustment will vary depending on each user. Numbers **'55-60-65'** marked on the adjustment shims and tightening adjusters show upward and downward adjustment of the stock. Users can adjust buttstock's position as per their own needs using the adjustment shims provided with the shotgun.

a. Stock should be uninstalled in order to place the adjustment shims. Remove the recoil pad using a screwdriver. Remove the buttstock fastening nut using socket wrench, and remove the buttstock from the receiver. Place the adjustment shim you wish to use in such a position as suitable according to the rear shape of the receiver.

(Figure 19)

b. Install the buttstock. Be sure to place the same number rear shim on the stock bolt as the shim installed at the receiver. The number marked on the rear shim and the adjustment shim should be the same. Place and tighten the buttstock shim and the buttstock nut to mount the buttstock to the receiver. The tightening should be sufficient, and there should be no gap between the buttstock and the receiver. Place the recoil pad, and tighten the screws.

(Figure 20)

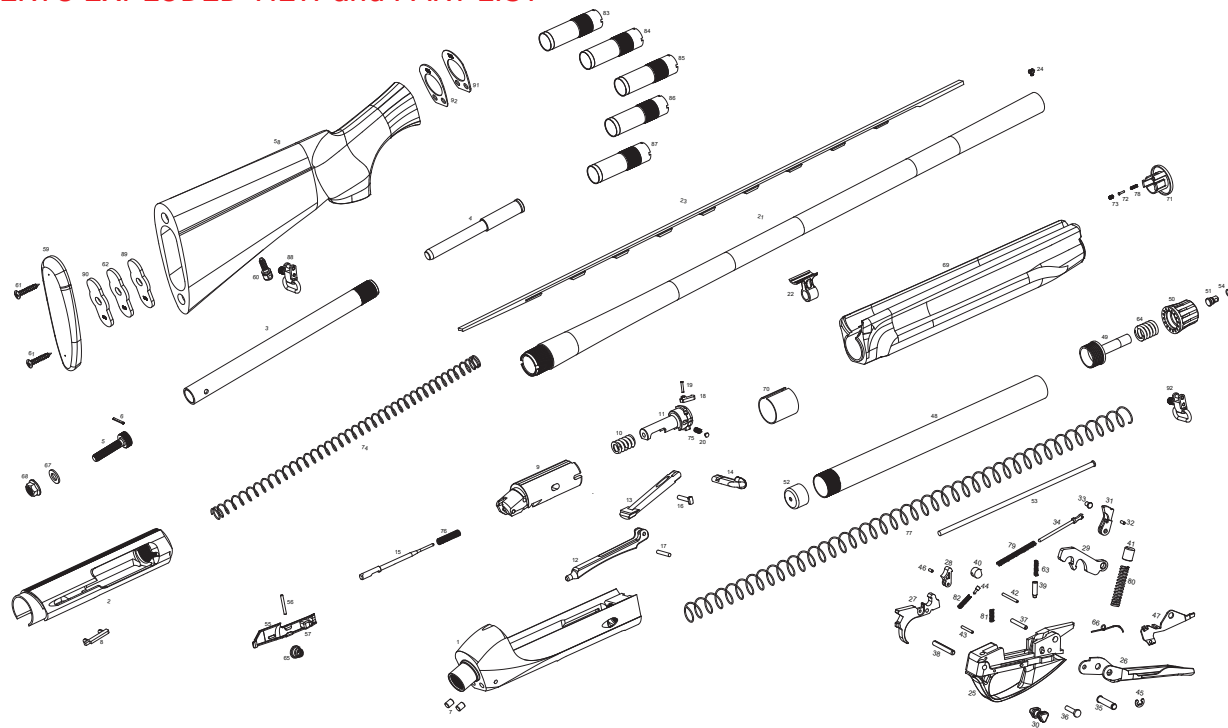


6. TROUBLESHOOTING

Shotgun firing or functioning failures stem from incorrect maintenance or incorrect ammunition.

The following table contains shotgun firing problems, their causes, and suggestions.		
PROBLEM	CAUSE	SOLUTION
Trigger can't be pulled	Bolt group might not be fully closed.	Pull and release the bolt handle.
	Hand safety is in on position.	Bring the safety to off position.
Cartridge doesn't fire	defective cartridge.	Remove the cartridge in the barrel, and chamber a new cartridge.
Shotgun doesn't function	Shotgun disassembled for maintenance is reassembled incorrectly.	Disassemble your shotgun, and reassemble it according to directions given in the user manual.

7. VERTU EXPLODED VIEW and PART LIST



Note: SAR USA reserves the right to make an amendment on features without notice when needed.

PART LIST

NO	PART NAME	NO	PART NAME	NO	PART NAME
1	LOWER RECEIVER	32	CARRIER COCKING SPRING PIN	63	SAFETY SPRING
2	UPPER RECEIVER	33	CARRIER COCKING FIXING PIN	64	MAGAZINE TUBE CAP SPRING
3	CLOSING TUBE	34	CARRIER MAIN SPRING HANDLE	65	CARRIER RETAINER SPRING
4	CLOSING SHAFT	35	HAMMER PIN	66	CARTRIDGE FEEDING PLATE SPRING
5	BUTTSTOCK CONNECTING SCREW	36	HAMMER SPRING BEDDING PIN	67	BUTTSTOCK SHIM
6	BUTTSTOCK CONNECTING SCREW PIN	37	TRIGGER FIXING PIN	68	BUTTSTOCK NUT
7	BUTTSTOCK POSITION PIN	38	TRIGGER GROUP FIXING PIN	69	FOREND
8	CARTRIDGE EJECTOR	39	SAFETY SPRING HOUSING	70	FOREND PLASTIC BED
9	BOLT	40	CARRIER MAIN SPRING STOPPER	71	FOREND FRONT SUPPORT
10	BOLT PRESSURE SPRING	41	HAMMER SPRING HEAD VERTU	72	FOREND FRONT SUPPORT PIN
11	LOCKING HEAD	42	TRIGGER LIMITER PIN	73	FOREND FRONT SUPPORT SCREW
12	CLOSING ROD	43	SAFETY SPRING FIXING PIN	74	RETURN SPRING
13	BOLT LOCK	44	HAMMER RETAINER PISTON	75	EXTRACTOR SPRING
14	BOLT HANDLE	45	HAMMER PIN RING	76	PIN SPRING
15	PIN	46	HAMMER RETAINER PIN	77	CARTRIDGE PUSHER SPRING
16	PIN FIXING PART	47	CARTRIDGE RELEASE PLATE	78	FOREND FRONT SUPPORT SPRING
17	CLOSING ROD PIN	48	MAGAZINE TUBE	79	CARRIER MAIN SPRING
18	EXTRACTOR	49	MAGAZINE CAP CONNECTING SCREW	80	HAMMER SPRING
19	EXTRACTOR PIN	50	MAGAZINE TUBE CAP	81	TRIGGER SPRING
20	EXTRACTOR PISTON	51	FOREND SLING SLOT	82	HAMMER RETAINER RING
21	BARREL	52	CARTRIDGE PUSHER CAP	83	1* CHOKE (70MM)
22	BARREL FASTENING RING	53	LIMITER PLUG	84	2* CHOKE (70MM)
23	RIB	54	FOREND SLING RING	85	3* CHOKE (70MM)
24	FRONT SIGHT FIBER	55	CARRIER RETAINER	86	4* CHOKE (70MM)
25	TRIGGER GUARD	56	CARRIER RETAINER PIN	87	5* CHOKE (70MM)
26	CARRIER	57	CARRIER RETAINER BUTTON	88	SLING EYELET
27	TRIGGER	58	STOCK	89	BUTTSTOCK TIGHTENING ADJUSTER (55)
28	HAMMER RETAINER	59	RECOIL PAD	90	BUTTSTOCK TIGHTENING ADJUSTER (65)
29	HAMMER	60	BUTTSTOCK SLING SLOT	91	BUTTSTOCK ADJUSTMENT SHIM (55)
30	SAFETY	61	BUTTSTOCK BASE SCREW	92	BUTTSTOCK ADJUSTMENT SHIM (65)
31	CARRIER COCKING HANDLE	62	BUTTSTOCK TIGHTENING ADJUSTER (60)		

8. ASPECTS WHICH ARE CONSIDERED OUTSIDE THE SCOPE OF WARRANTY

1. Disregarding the rules that are specified in the user manual of your shotgun will void the warranty.
2. Shotguns have a relatively large bore. As such, extra precaution must be taken to avoid accidental barrel obstruction from foreign objects. Barrels with "pressure swells" will not be covered under warranty as an obstructed barrel must be considered a user-caused issue.
3. Chokes must be installed correctly, tightly and used with appropriate ammunition for their designated restriction amount.
4. Water damage can occur, especially in regards to wooden stocks and forends and unprotected metal surfaces. Keep your firearm clean and dry. If your firearm becomes wet for any reason, it is recommended you completely disassemble, clean, lubricate and re-assemble according to manufacturer instructions.
5. Use only high quality cleaning and lubrication chemicals. Remove all cleaning agents thoroughly and make sure to lubricate all metal surfaces according to the manufacturer instructions.
6. Only use factory ammunition. Remanufactured or reloaded ammunition will void warranty.
7. Only use steel shot ammunition with appropriate chokes.
8. Never shoot shotgun with the stock removed!
9. Do not use vegetable or animal oil for the maintenance of your shotgun under any circumstances.

⚠ WARNING

PLEASE FOLLOW THE RULES STATED ABOVE. IF NOT FOLLOWED AND THERE IS A FAILURE, THE SHOTGUN WARRANTY WILL BE VOID.

NOTE:

[illegible]

NOTE:

This image shows a full page of white paper with horizontal dotted lines. The lines are evenly spaced and run across the width of the page, providing a guide for handwriting or typing. There are no margins, text, or other markings on the page.

1-877-SAR-GUNS
1-877-727- 4867
www.sarusa.com