

SEMI - AUTOMATIC SHOTGUNS



- MAGIC
- SA - W 700 12 GA
- SA - W 700 20 GA
- SA - X 700 20 GA
- SA - X 700 YOUTH 20 GA
- SA - X 700 R

SAR USA

**OWNER'S MANUAL
MAINTENANCE & PARTS LIST**

⚠ WARNING

SAR USA disclaims any and all liability arising out of the use of any SAR USA products (i) contrary to instructions or regulations; (ii) without caution; (iii) by any parties other than the license holder; (iv) through making unauthorized or illegal modifications thereon; (v) utilizing non-standard or out of spec ammunition; (vi) maintenance or repair services rendered by unauthorized persons; or (vii) under any similar conditions whatsoever. SAR USA disclaims all liability for any injuries or property damages arising from the malicious or negligent use of products.

⚠ WARNING

All pictures, photos and definitions in this manual are provided only for information purposes. Manufacturer reserves its right to apply changes to any models any time without prior notice as deemed necessary for improving the products or in line with any manufacturing or commercial requirements.

CONTENTS

1. GENERAL PRECAUTIONS	4
2. GENERAL SAFETY RULES	5
3. PRODUCT AND FEATURES IDENTIFICATION	10
3.1. SUPPLIED COMPONENTS	10
3.2. MAIN FEATURES OF THE PRODUCT	11
3.3. BASIC PARTS	12
3.4. TECHNICAL DATA and FEATURES	13
4. PUTTING YOUR PRODUCT INTO SERVICE	14
4.1. PRELIMINARY PREPARATION	14
4.1.1. USE OF SAFETY	14
4.2. ASSEMBLY OF THE SHOTGUN	14
4.3. AMMUNITION	15
4.4. FIRING	16
4.4.1. CONTROLS AND SAFETY BEFORE SHOOTING	16
4.4.2. LOADING THE SHOTGUN	17
4.4.3. SELECTION OF PISTON DIRECTION	18
4.4.4. ESTABLISHING A BORESIGHT	19
4.4.5. FIRING	19
4.4.6. UNLOADING THE SHOTGUN	20
5. MAINTENANCE AND CLEANING	21
5.1. DISASSEMBLING THE SHOTGUN	21
5.2. MAINTENANCE AND CLEANING OF THE SHOTGUN	23
5.3. ASSEMBLING THE SHOTGUN	24
5.4. FUNCTION CHECK	26

6. ASSEMBLY OF ADDITIONAL EQUIPMENT	26
6.1. STOCK ADJUSTMENT	26
6.2. FIBER OPTIC REAR SIGHT ADJUSTMENTS	28
6.3. INTENDED USE OF CHOKE	29
6.4. INSTALLATION AND REMOVAL OF CHOKES	30
6.5. INSTALLATION AND REMOVAL OF LIMITING PLUG	31
7. TROUBLESHOOTING	33
8. EXPLODED VIEWS AND PART LISTS	34
8.1. MAGIC 12 GA EXPLODED VIEW	34
8.2. SA-W 700 12 GA EXPLODED VIEW	36
8.3. SA-W 700 20 GA EXPLODED VIEW	38
8.4. SA-X 700 20 GA EXPLODED VIEW	40
8.5. SA-X 700 YOUTH EXPLODED VIEW	42
8.6. SA-X 700 R EXPLODED VIEW	44
9. ASPECTS WHICH ARE CONSIDERED OUTSIDE THE SCOPE OF WARRANTY	46

1. GENERAL PRECAUTIONS

Read the instructions and warnings in this manual carefully before handling SAR USA products for any purposes.

As a prerequisite for putting SAR USA products into service and the safety requirements in their use, cleaning and maintenance, you must be familiar with and follow exactly all information provided in this manual. Please do not use the product unless you read the instructions for safety and use thoroughly and carefully. If you need any further information, please consult your dealer or the factory.

Please observe the laws of your region or your country governing the purchasing, handling and use of firearms.

All firearms are dangerous. Therefore, your product is sold to you assuming that you comply with all instructions for use and SAR USA disclaims in advance any and all responsibility for any technical damage or other consequences whatsoever that may be caused by the misuse of the product, including any harm or injury or property damage arising in relation to the following:

- Always keep the muzzle pointed in a safe direction.
- Firearms should be unloaded and secured when not in use.
- Do not rely on your firearm's safety.
- Be sure of your target and what's beyond it.
- Make sure that your ammunition matches the caliber or gauge of your gun.
- If your firearm fails to fire when the trigger is pulled, handle with care. Unload safely and immediately.
- It is your responsibility to ensure that you are in compliance with all applicable laws and ordinances regarding the use of your firearm.
- Other factors directly or indirectly beyond our control.

2. GENERAL SAFETY RULES

2.1. STRICTLY AVOID AIMING THE GUN UNLESS PREPARED TO SHOOT.

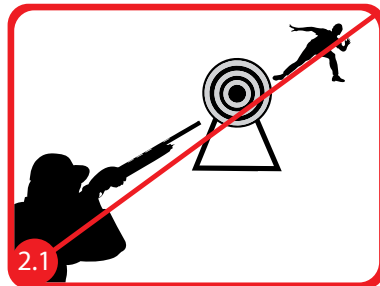
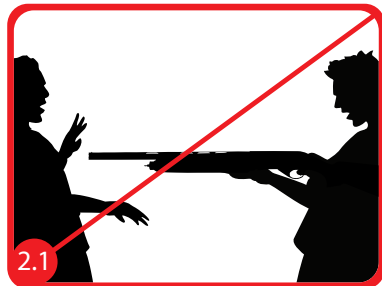
Do not point the gun's muzzle at any person. This is significant particularly when you are loading and unloading the gun. When you shoot at a target, be careful about what is behind the target. If you miss or hit the target, ensure that the shot does not lead to an unexpected injury or damage.

2.2. ALWAYS ACT AS IF THE GUN IS LOADED.

Never assume the gun is empty. In order to determine whether there is any ammunition in the shotgun, you must check the chamber and magazine tube carefully. This is the only way to know if it is loaded.

2.3. SECURE YOUR FIREARM SO CHILDREN DO NOT HAVE ACCESS

It is your responsibility to secure your firearm away from children and unauthorized people at all times. Please unload your gun in order to reduce the risk of accidents involving children. Lock the firearm and keep the ammunition locked in a separate place.



2.4. DON'T SHOOT AT WATER OR A HARD SURFACE.

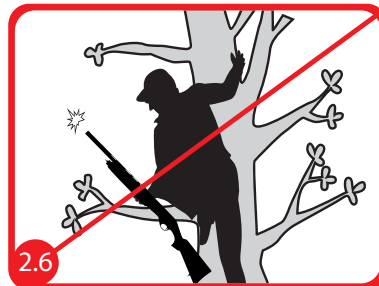
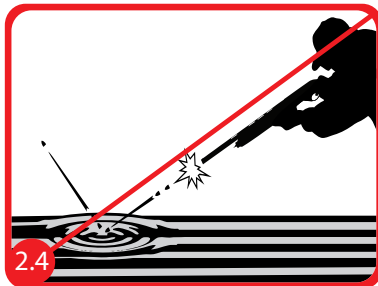
Shooting at water or a hard surface causes the shot to change direction unexpectedly; as a result, you or people around you might get injured.

2.5. KNOW THE SAFETY FEATURES OF THE GUN YOU ARE USING; HOWEVER, DON'T FORGET THAT SAFETY DEVICES CAN'T TAKE THE PLACE OF SAFETY PROCEDURES.

Don't rely solely on the safety in terms of preventing accidents. It is essential that you know the safety features of the gun you are using; accidents can be prevented best by complying with safety rules and safe usage procedures defined in the product manual. Accidents are always a result of not complying with basic safety rules.

2.6. NEVER CLIMB A TREE OR FENCE WITH A LOADED GUN.

Before climbing up or down a tree or climbing over a fence, open your gun, unload the magazine and engage the safety. Don't push anything with a loaded gun.



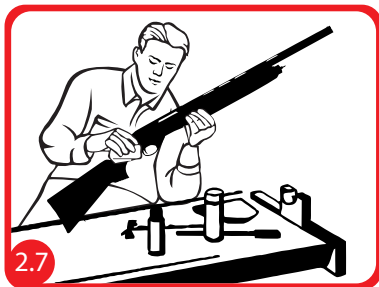
2.7. PERFORM PROPER MAINTENANCE OF YOUR GUN.

Keep your gun in its case so that dirt or dust doesn't accumulate on the operating parts. Clean and lubricate your gun in accordance with the instructions in the user manual in order to prevent damage and contamination. Always make sure the barrel is clean before loading the firearm. Firing the gun with barrel obstructions might cause the barrel to swell or burst causing an accident.

If you hear a strange sound when you fire the gun, stop shooting immediately, activate the safety and unload the gun. Make sure the chamber and the barrel are not obstructed.

2.8. ALWAYS WEAR EYE AND HEARING PROTECTION.

Back blast of gas, gun powder and metal parts injuring the shooter is a remote possibility and injuries that occur in such cases can be serious. The shooter must always use impact-resistant eye protection when firing the gun. Hearing protection will help prevent hearing damage.

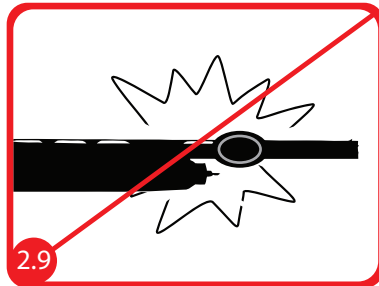


2.9. USE PROPER AMMUNITION.

Only use ammunition that is designed for use in the specified gauge or caliber of your weapon. Reloaded or remanufactured ammunition may increase the potential pressure, change cartridge head space and introduce other defects, which might damage your gun or injure you or people around you. Don't use ammunition which is longer than specified. This poses a danger for the shooter as well as the gun.

2.10. AVOID CONSUMING ALCOHOLIC DRINKS OR DRUGS THAT WEAKEN THOUGHTS AND REFLEXES.

Don't handle or shoot the gun after consuming alcohol. Don't use the gun when you are under the effect of any drug.

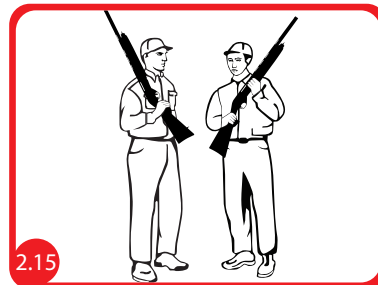
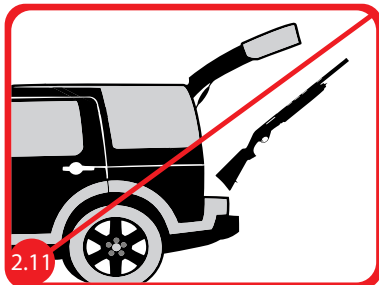


2.11. DON'T TRANSPORT THE GUN WHEN IT IS LOADED.

Unload the shotgun before putting it in an automobile. (ensure chamber and magazine are empty). Hunters and target shooters should only load their shotguns when they reach their destination. If you are carrying a gun for self-protection purposes, keep the chamber empty in case of accidental firing.

2.12. MAKE SURE THAT YOU KNOW THE OPERATION MODES OF THE SHOTGUN VERY WELL BEFORE USING OR LOADING IT.**2.13. THE SHOTGUN MUST BE REPAIRED ONLY AT AN AUTHORIZED SERVICE CENTER.****2.14. MAKING MECHANICAL MODIFICATIONS ON THE PARTS OF THE SHOTGUN IS DANGEROUS AND PROHIBITED. PRODUCTS SUBJECTED TO SUCH OPERATIONS WILL BE OUTSIDE THE SCOPE OF THE WARRANTY.****2.15. THE PERSON USING THE SHOTGUN MUST BE 2 METERS AWAY FROM OTHER PEOPLE AT A MINIMUM.**

The person using the shotgun must be 2 meters away from other people at a minimum for safety reasons. When carrying your shotgun, always ensure the muzzle is pointed in a safe direction at all times.



3. PRODUCT AND FEATURES IDENTIFICATION

3.1. SUPPLIED COMPONENTS

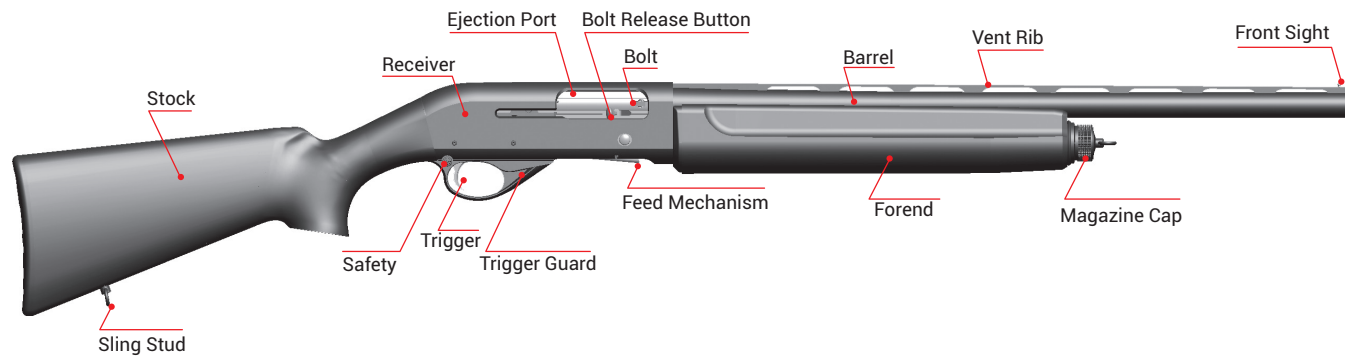
The parts included in the product packaging are as follows:

- 1 Shotgun
- 1 Manual
- 1 Limiter
- 5 Chokes
- 1 Choke Wrench
- 1 Case



3.2. MAIN FEATURES OF THE PRODUCT

SAR USA shotguns are manufactured with state-of-the-art technology, making them suitable for use in shooting sports, hunting and self-defence and use by military and Law Enforcement. All SAR USA shotguns incorporate the utmost in safety features. When properly used, these safety features ensure safe and satisfying operation for both the user and any bystanders. SAR USA shotguns are also designed with modern ergonomic features that allow the user comfortable and consistent performance in any application. Always follow all safety rules when operating ANY SAR USA products. Always familiarize yourself with the safety rules and specific technical operating details of each firearm in accordance with its operating manual/instructions as defined by the manufacturer.



3.4. TECHNICAL DATA and FEATURES

MODEL	Magic / Magic Slug	SA-W 700	SA-W 700	SA-X 700	SA-X 700 YOUTH	SA-X 700 R
GAUGE	12 GA	12 GA	20 GA	20 GA	20 GA	12 GA
MECHANISM	S-A	S-A	S-A	S-A	S-A	S-A
CHAMBER	3" - 76 mm	3" - 76 mm	3" - 76 mm	3" - 76 mm	3" - 76 mm	3" - 76 mm
CAPACITY	5+1	5+1	5+1	5+1	5+1	5+1
BARREL LENGTH	24" - 61 cm 26" - 66 cm 28" - 71 cm	24" - 61 cm 26" - 66 cm 28" - 71 cm	24" - 61 cm 26" - 66 cm 28" - 71 cm	24" - 61 cm 26" - 66 cm 28" - 71 cm	26" - 66 cm 28" - 71 cm	22" - 56 cm
OVERALL LENGTH	44.8" - 114 cm 46.8" - 119 cm 48.8" - 124 cm	44.4" - 113 cm 46.5" - 118 cm 48.4" - 123 cm	44.4" - 113 cm 46.5" - 118 cm 48.4" - 123 cm	44" - 112 cm 46" - 117 cm 48" - 122 cm	45.2" - 115 cm 47.2" - 120 cm	42.9" - 109 cm
OVERALL HEIGHT	7.8" - 20 cm	7.4" - 19 cm	7.4" - 19 cm	7.8" - 20 cm	6.6" - 17 cm	7.8" - 20 cm
WIDTH	1.9" - 5 cm	1.9" - 5 cm	1.9" - 5 cm	1.9" - 5 cm	1.9" - 5 cm	1.9" - 5 cm
WEIGHT	105.4 oz - 2990 g 106.5 oz - 3020 g 107.5 oz - 3050 g	107.5 oz - 3050 g 108.7 oz - 3075 g 109.3 oz - 3100 g	96.3 oz - 2725 g 97.1 oz - 2755 g 98.2 oz - 2785 g	96.0 oz - 2720 g 97.0 oz - 2750 g 98.0 oz - 2780 g	94.0 oz - 2665 g 94.7 oz - 2685 g	107.2 oz - 3040 g
SPECIFICATION	Aluminium Alloy Laser Marked Receiver * Oiled Finish Turkish Walnut Stock & Forend Red Fiber Optic Front Sight	Aluminium Alloy Laser Marked Receiver * Turkish Walnut Stock & Forend	Aluminium Alloy Laser Marked Receiver * Turkish Walnut Stock & Forend	Aluminium Alloy Laser Marked Receiver Synthetic Stock & Forend	Aluminium Alloy Laser Marked Receiver Synthetic Stock & Forend	Aluminium Alloy Lazer Marked Optics- ready Receiver Synthetic Stock & Forend Red Fiber Optic Front Sight Adjustable Red Fiber Optic Rear Sight Rifled Barrel

4. PUTTING YOUR PRODUCT INTO SERVICE

4.1. PRELIMINARY PREPARATION

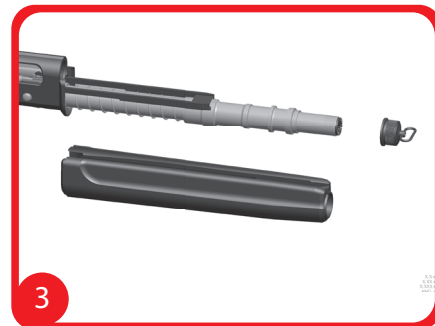
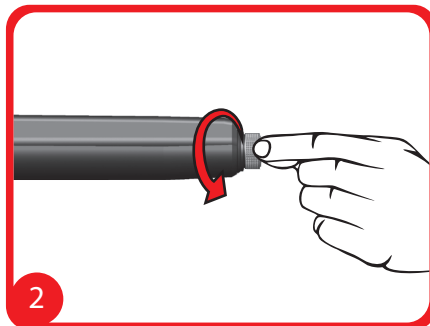
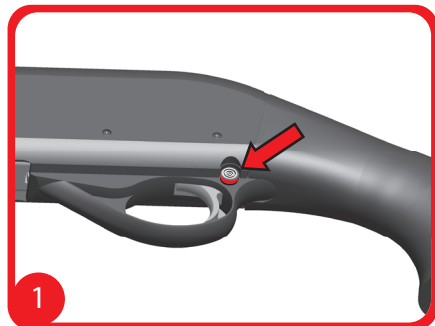
4.1.1. USE OF SAFETY

The safety button is on the trigger guard. This button, which can move left and right, switches the shotgun to shooting or safety position. Seeing the red mark on the button means the shotgun is ready to fire. (Figure 1)

4.2. ASSEMBLY OF THE SHOTGUN

The barrel of the shotgun, stock and receiver group are packaged separately. Perform the assembly operation of the barrel as follows:

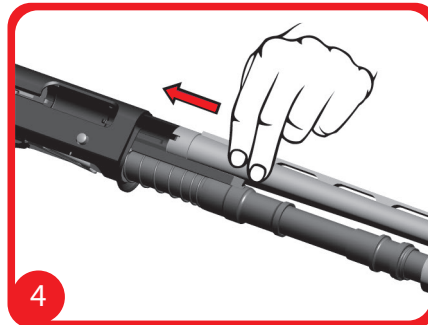
- a. Check the barrel. Make sure the muzzle and chamber are clean and there is no debris or clog.
- b. Turn the magazine cap anti-clockwise and remove it, pull off the forend. (Figure 2 - 3)



- c. Pull the bolt assembly to the rear with the bolt handle until it locks in the retracted position.
- d. Insert the barrel in a way that gas cylinder settles on the magazine tube. (Figure 4)
- e. Place the forend in its position. Screw the magazine cap (clockwise) onto the magazine tube and continue until it is hand tight. Do not over-tighten.
- f. Close the mechanism by pressing bolt release button; when performing this operation, keep your fingers away from ejection port.
- g. Operate the mechanism by moving back and forth a few times. Check the magazine cap. If there is any gap, tighten the magazine cap until this gap is closed.

4.3. AMMUNITION

- Only use factory original and high-quality cartridges.
- Only use cartridges which are suitable for the gauge of your shotgun.
- Do not forget that shotguns which are used with non-standard cartridges will be outside the scope of warranty.



4.4. FIRING

4.4.1. CONTROLS AND SAFETY BEFORE SHOOTING

- Always aim the shotgun in a safe direction.
- When you handle the shotgun, keep your finger away from the trigger.
- Check and make sure there is not foreign material inside the barrel.
- If there is any excessive oil inside the shotgun, remove it before use.
- Loading and unloading the shotgun in a car, inside a building or similar narrow and closed areas (except shooting galleries) must strictly be avoided.
- Do not rely on the safety systems. They can not substitute for using the utmost care in handling your gun.

△ WARNING

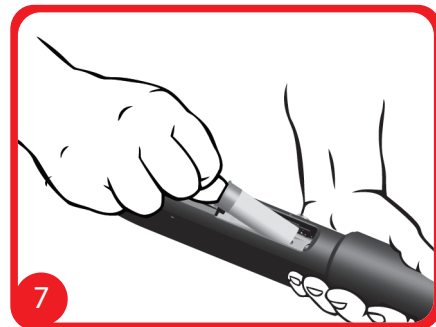
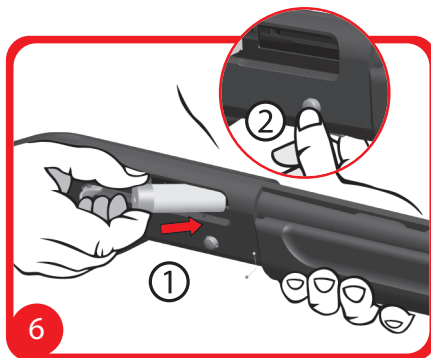
- A foreign body inside the barrel might cause the barrel to swell or cause other damage inside the shotgun, and lead to the injury of the person who fires the shotgun or other people. Make sure that other people who are next to you during shooting are located at a safe distance so they are not harmed in any way.
- Always use appropriate hearing and eye protection during shooting. Warn the people near you when you are about to shoot.
- Keep the shotgun aimed in a safe direction at all times. Always ensure both the chamber and the magazine are empty and the bolt is locked open both before and after shooting to ensure your safety as well as the safety of those around you.

4.4.2. LOADING THE SHOTGUN

- a. Engage the safety and ensure the weapon is pointed in a safe direction.
- b. Bring the mechanism to rear position by pulling the bolt lever. (Figure 5)
- c. Insert the shell in the ejection port. Close the mechanism by pressing the bolt release button, located on the right hand side of the shotgun. Shell is pushed in to the chamber automatically. (Figure 6)
- d. For loading the magazine, carrier will come to the released position after the bolt is closed. Push the shells past the carrier into the magazine. (Figure 7)

⚠ WARNING

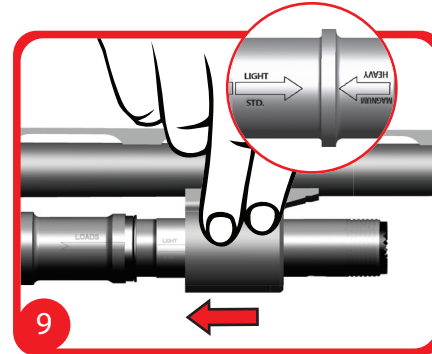
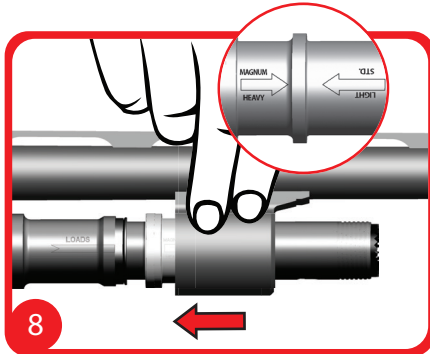
Your shotgun is now loaded and ready for shooting.



4.4.3. SELECTION OF PISTON DIRECTION

The piston in the shotgun serves two purposes:

- a. When shooting loads designated as “Heavy” or “Magnum”, install the piston with the “Magnum/Heavy” arrow pointing toward muzzle end of the weapon. (Figure 8)
- b. When shooting loads designated as “Standard” or “Light”, install the piston with the “Std./Light” arrow pointing towards the muzzle end of the weapon.(Figure 9)



4.4.4. ESTABLISHING A BORESIGHT

The target line is established by aligning rib direction and front sight. (Figure 10)

⚠ WARNING

Always follow safe handling procedures when shooting or handling ANY firearm. Especially those you believe to be “unloaded.” Ensure the safety of your target area and especially the area behind your intended target as projectiles and shot may travel much further than you may intend.

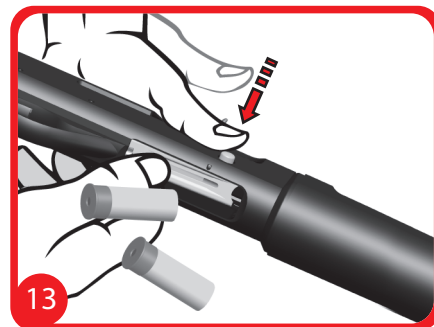
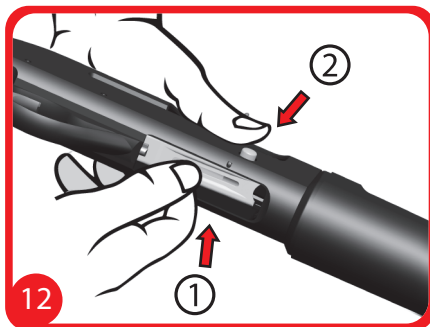
4.4.5. FIRING

- Bring the safety button to the shooting position.
- Aim the shotgun at the target.
- Put your finger on the trigger and pull it slowly.
- Semi-automatic shotguns will eject spent hulls after firing and will automatically reload the chamber with an unfired cartridge from the magazine with each pull of the trigger.
- Your shotgun is ready for the second shot. You can continue shooting by pulling the trigger.
- After all the shells are fired the action will lock in the open position, ready for reloading. If you are done shooting, and before moving with your firearm, remember to engage the safety and leave the action in the open/locked position as an indicator to other shooters that your weapon is safe.



4.4.6. UNLOADING THE SHOTGUN

- a. Aim the shotgun in a safe direction and engage the safety.
- b. Pull back the bolt lever to remove the shell in the chamber. (Figure 11)
- c. Press the carrier towards the inside of the receiver with your hand. Press the bolt release with the other hand and take out the cartridges in the magazine tube one by one. Continue this operation until all the cartridges are removed. (Figure 12-13)

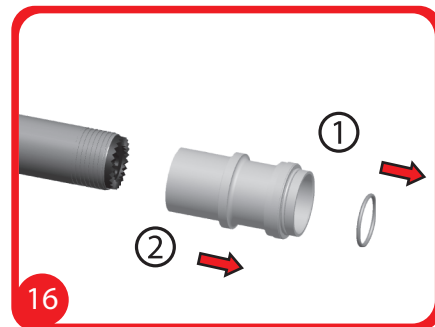
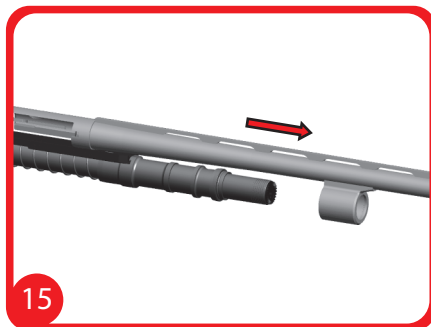
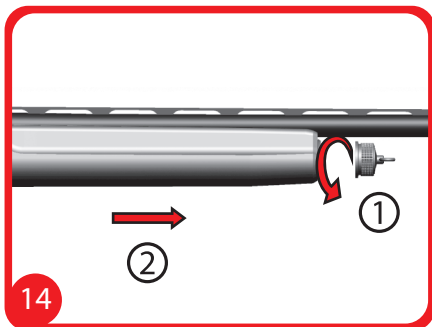


5. MAINTENANCE AND CLEANING

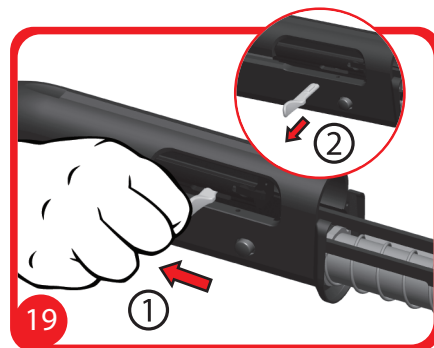
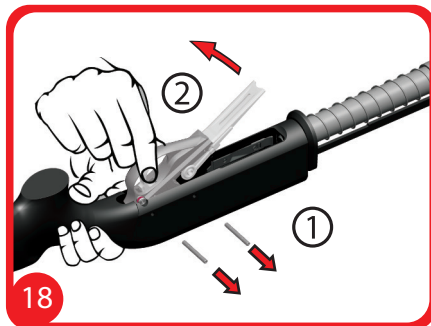
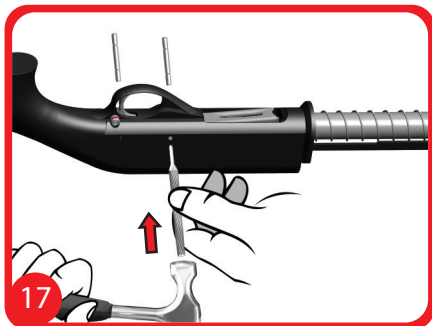
5.1. DISASSEMBLING THE SHOTGUN

Ensure the weapon magazine and chamber are unloaded and the action is locked in the open position.

- a. Remove the magazine cap and slide the forend off towards the muzzle. (Figure 14)
- b. Detach the barrel from the receiver. If the barrel will not readily detach from the receiver, it may help to open the action slightly to unlock the bolt from the barrel extension. (Figure 15)
- c. Remove the cylinder rubber seal and the piston. (Figure 16)



- a. Take out the trigger group anchor pins by means of a separate pin or punch. (Figure 17)
- b. Pull the trigger group and detach from the receiver. (Figure 18)
- c. Move the bolt back until the cocking lever is about half way centered in the ejection port. You can keep it here by holding the action arms with your hand around the magazine tube. Grasp the bolt handle and pull it straight out perpendicular to the receiver. NOTE: Do not let go of the action bars at this stage. There will be considerable spring pressure on the bolt and if released, the bolt could exit the receiver with enough force to cause injury or damage. Release the bolt forward in a controlled manner only. (Figure 19)
- d. Remove the mechanism group in accordance with the following order.
 - 1- Cocking-bar support
 - 2- Cocking-bar
 - 3- Mechanism
 - 4- Mechanism guide bracket
 - 5- Closing spring



FURTHER DISASSEMBLY OF THE SHOTGUN IS NOT RECOMMENDED. FURTHER DISASSEMBLY MUST BE PERFORMED BY AN AUTHORIZED SERVICE CENTER.

5.2. MAINTENANCE AND CLEANING OF THE SHOTGUN

It is very important to be well-informed on the maintenance and cleaning of the shotgun. Experience has shown that most problems with weapons occur due to poor or improper maintenance. It is essential to attach particular importance to cleaning, lubricating and protection of the shotgun. These operations determine whether the shotgun will function appropriately when you need it.

After using the shotgun, clean the dirt, combustion residues and oil that form on the external sides. Pull back the mechanism group, clean the internal parts until combustion residues are completely eliminated by means of the cleaning rod, remove cleaning chemicals thoroughly, then lubricate with gun oil. When putting aside the shotgun when not in use and particularly at the end of the hunting season, perform a complete disassembly, clean and lubricate each part of the shotgun. Cleaning must be performed with a soft brush and by immersing it in oil. Do not use corrosive and metal objects for cleaning. Make sure that all the powder residue is removed. After shooting, inner parts of the barrel and gas cylinder, gas outlet holes, chamber and piston will be contaminated with more powder residue, these parts must be cleaned and lubricated thoroughly.

When the maintenance of your shotgun is neglected and especially when it is not used for a long period of time, make sure the piston is moving on the magazine tube easily. If the piston does not move easily, remove and clean it and ensure that it moves after lubrication. When putting aside a shotgun which will not be used for a long period of time, make sure that bolt is closed and the hammer is dropped.

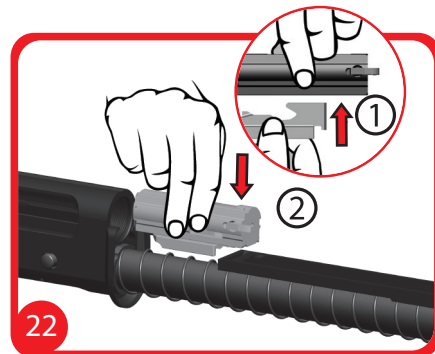
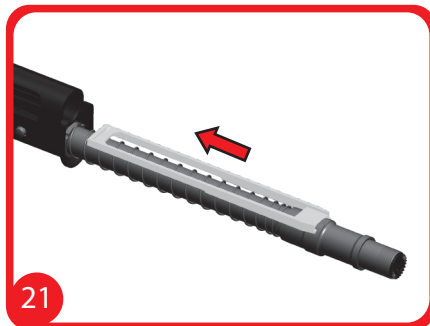
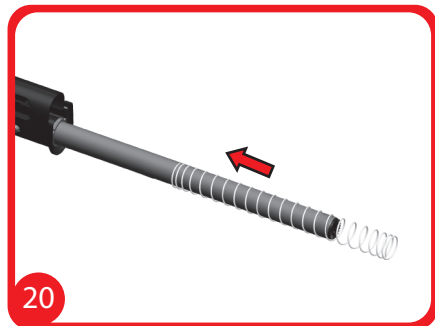
Cleaning and lubricating a shotgun is the the best guarantee for protecting it against corrosion, which forms on respective parts as a result of propellant combustion. Maintenance of your SAR USA semi-automatic shotgun is not difficult because of the simplicity of design and quality of material.

⚠ WARNING

Strictly avoid using vegetable oil or animal oil for the maintenance and cleaning of the shotgun. Only use gun oil.

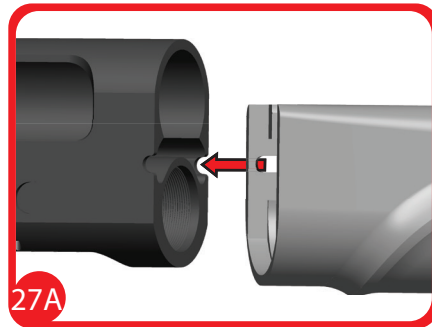
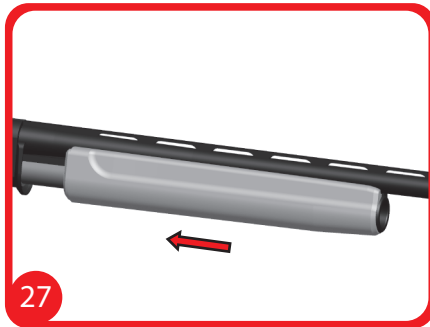
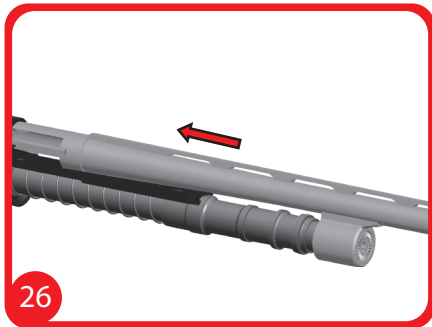
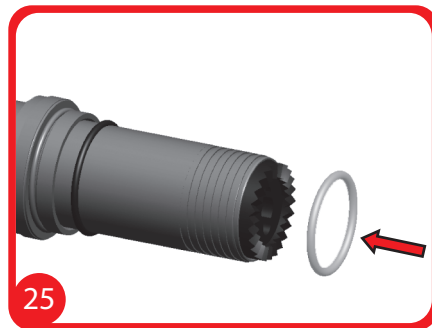
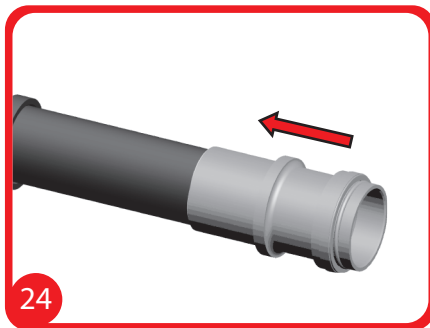
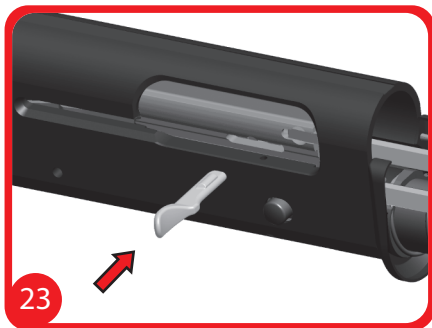
5.3. ASSEMBLING THE SHOTGUN

- a. Place the closing spring on the magazine tube. (Figure 20)
- b. Place the cocking rod and front support on the magazine tube, as shown. (Figure 21)
- c. Place the bolt guide bracket on the bolt and insert it into its slot on the cocking rod. (Figure 22)
- d. Pull back the cocking rod slowly and re-insert the handle into the bolt lever on its pin in the mechanism. (Figure 23)
- e. Fit the piston on the magazine tube. (Figure 24)
- f. Fit the cylinder rubber seal on the magazine cap by gently stretching. Rubber seal is significant for your shotgun's operation. Do not forget to fit the rubber seal. (Figure 25)
- g. Attach the barrel and forend. (Figure 26-27-27A)



⚠ WARNING

When performing the assembly of the mechanism guide bracket, do not forget to fit the mechanism lever spring.



- a. Turn the magazine cap clock-wise and screw it into place. (Figure 28)
- b. Check whether the hammer in the trigger group is set; if not, set it by pressing towards the back. Make sure that carrier lock is in released position. (Figure 29)
- c. Place the trigger group in a way that the receiver slots and holes are aligned. After that, press the two retaining pins into their respective holes. (Figure 30)

5.4. FUNCTION CHECK

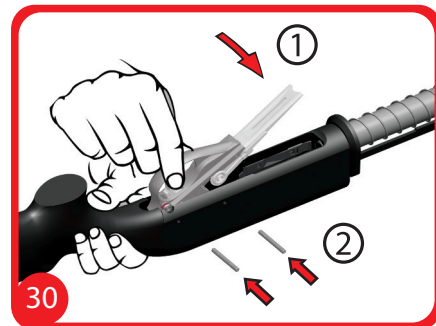
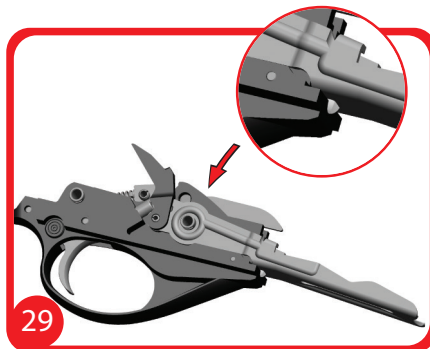
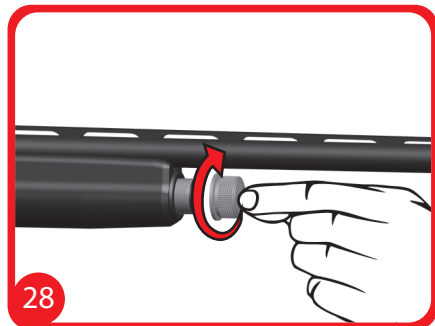
If the mechanism group opens and closes easily, the assembly of your shotgun has been completed successfully.

6. ASSEMBLY OF ADDITIONAL EQUIPMENT

6.1. STOCK ADJUSTMENT

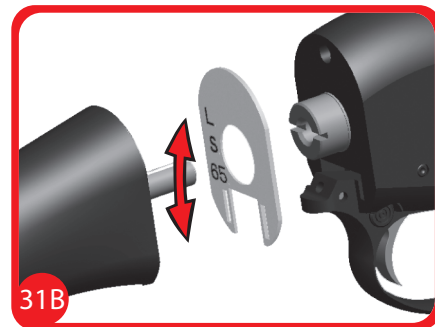
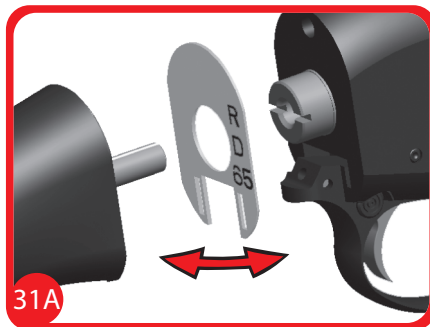
(This applies to shotguns which are equipped with wooden stocks.)

In shotgun models, which are equipped with wooden stocks, adjustment plates ensure the up-down, right-left movement of the stock. Since these adjustments vary according to the user, adjustments must be performed by the user.



The surface which is marked with R.D. letters ensure that the stock casts towards the right side, the surface which is marked with L.S. letters ensure that the stock casts towards the left side. The numbers like 50-55-60-65, written on the adjustment plates, refers to up-down adjustments of the stock known as drop. By making use of the given adjustment plates, user can adjust the position of the stock according to their own style of use. (Figure 31-31A-31B)

The stock must be removed in order to attach the adjustment plates. Remove the recoil pad with a screw-driver. Remove the stock mounting bolt with a torque or socket wrench and detach the stock from the receiver. Place the adjustment plate you want to use in a position which is suitable to the back of the receiver. Tighten the stock mounting bolt with the bolt and washer and mount the stock on the receiver. Tighten until there is no gap between the stock and the receiver. Insert the recoil pad and tighten the screws.



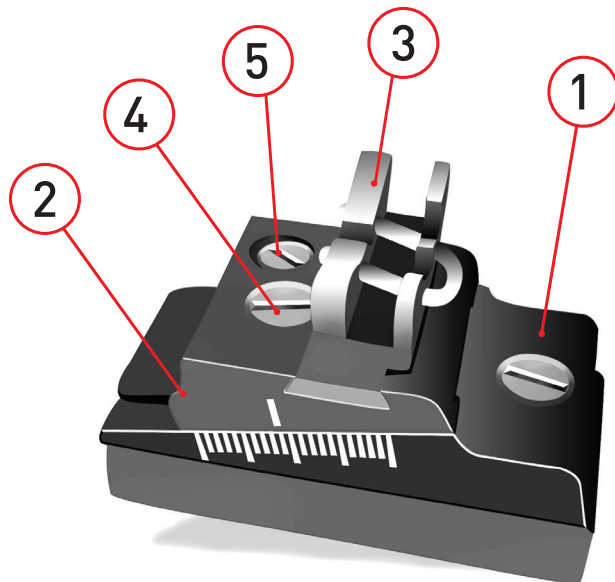
6.2. FIBER OPTIC REAR SIGHT ADJUSTMENTS

(This applies for shotgun models which are equipped with adjustable rear sight.)

- 1- Fixed body
- 2- Up-down adjustment part
- 3- Right-left adjustment part
- 4- Right-left adjustment part fixing bolt
- 5- Up-down adjustment part fixing bolt

1- Right arm adjustment: Keep your shotgun at the aiming position and loosen the bolt #4 on the adjustable rear sight. Move the part #3 to right or left according to deviation direction. Tighten the bolt #4 after performing the adjustment.

2- Up-down adjustment: Keep your shotgun at the aiming position and loosen the bolt #5 on the adjustable rear sight. Move the part #2 to up or down according to deviation direction. Tighten the bolt #5 after performing the adjustment.

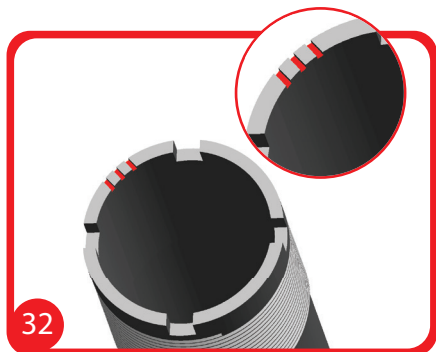


6.3. INTENDED USE OF CHOKE

Chokes are intended to be adjusted according to the distance of the target. You can change the chokes according to the type of shooting you'd like to do. Using the wrong chokes might damage the barrel.

⚠ WARNING: Use slug cartridges exclusively with choke marked "Cylinder", identified with 5 hash-marks on the muzzle end. If slug cartridge is used with barrels which are equipped with other types of chokes, you can injure yourself and damage your shotgun. Before firing your shotgun with steel shot cartridges, make sure that chokes are marked with 'steel shot.' Otherwise, you might damage your shotgun and the chokes.

Look at the notches on the muzzle end of choke tube to identify the chokes in the barrel. The number of stars on the side of the choke tube also indicates the number of notches on the choke. (Figure 32)



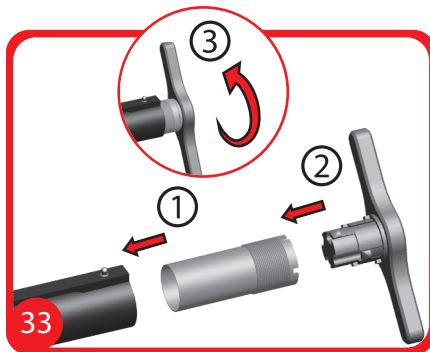
CHOKE MARKS	DESCRIPTION	USAGE
★	F (Full)	Used for long-range. Duck, goose hunts, birds.
★★	IM (Improved Modified)	Used for long-range. Partridges, rabbits and etc.
★★★	M (Modified)	Used for medium-range. Woodcock, pheasant, quail etc.
★★★★	IC (Improved Cylinder)	Used for short-range. Quail and dove.
★★★★★	Cylinder	Used for very short-range and slug cartridges.

6.4. INSTALLATION AND REMOVAL OF CHOKES

Internal Chokes: Use the choke wrench when inserting and removing the chokes to and from the barrel. When inserting the chokes to the barrels, tighten the choke tube until the choke tube is flush with the muzzle of the barrel.(Figure 33)

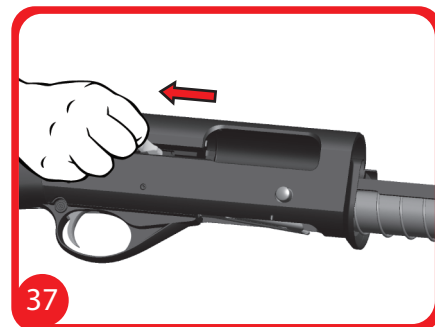
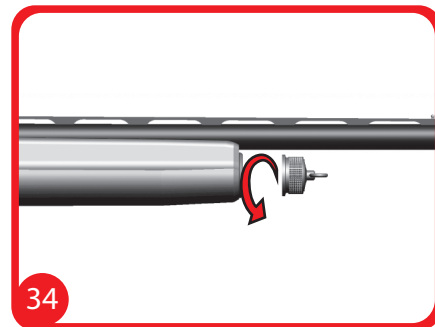
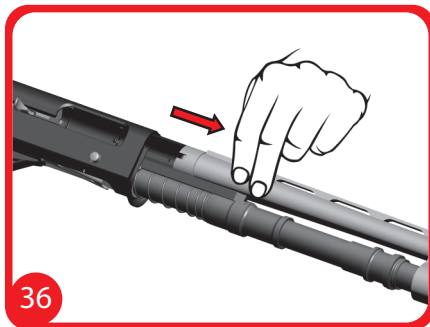
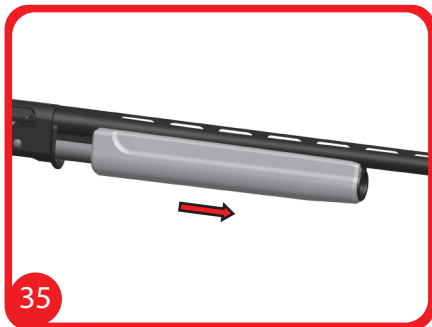
⚠ **WARNING:** Do not fire your shotgun before inserting the internal chokes. Otherwise, choke threads of the barrel can be damaged and become unusable without professional repair.

⚠ **WARNING:** When installing choke tubes, be careful not to cross-thread. If choke tube feels excessively tight when screwing into place , consider removing the tube and starting over. Cross-threading will require professional repair.

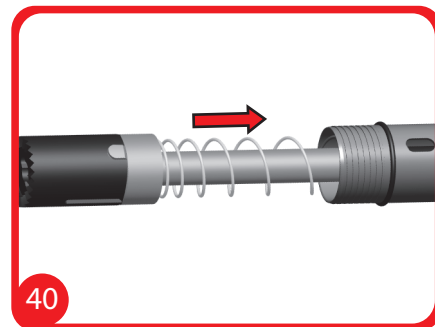
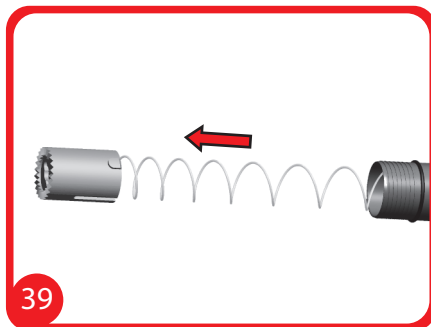
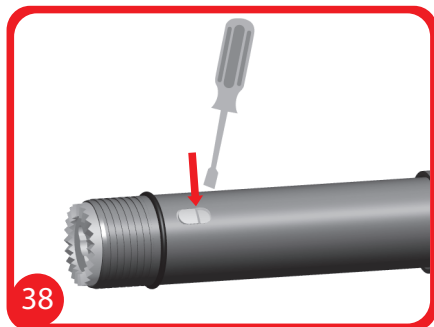


6.5. INSTALLATION AND REMOVAL OF LIMITING PLUG

- a. Remove the magazine cap and forend. (Figure 34-35)
- b. Remove the barrel and lock the bolt open. (Figure 36-37)



- c. Press the spring stopper located on the edge of the magazine tube inside and push it towards the muzzle end by means of a screw-driver and remove it from the open end of the magazine tube. (Figure 38)
- d. Use caution! The internal spring of the magazine tube will push forward out the open end of the magazine tube and can do so with considerable force (Figure 39)
- e. Insert the plug inside the magazine tube in a way that it is located inside the spring of the magazine. Insert the spring stopper to the magazine tube along with plug. Snap the spring stopper to its slot. (Figure 40)
- f. Removal process is the exact reverse of installation process.



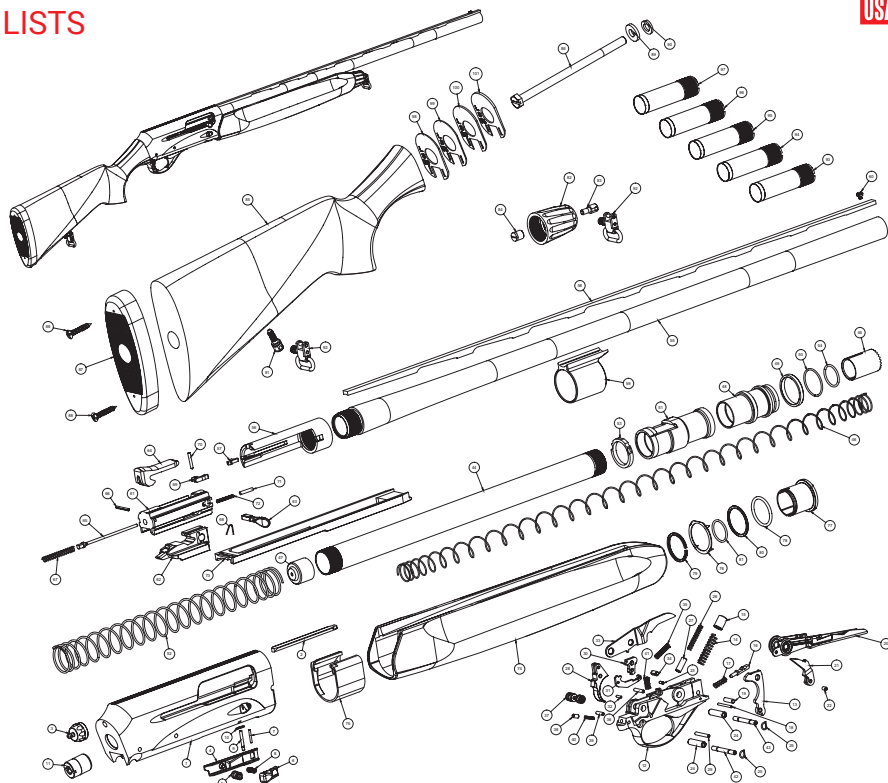
7. TROUBLESHOOTING

Malfunction in firing the shotgun or operational failures stemming from incorrect maintenance or incorrect ammunition.

Possible problems and their solutions.		
PROBLEM	CAUSE	CORRECTION
Trigger can not be pulled	Safety is engaged.	Move safety selector to "fire" position.
The shotgun does not function	Wrong assembly of the shotgun which was disassembled for maintenance.	Disassemble your shotgun and perform the assembly operation in accordance with the instructions in the user manual.

8. EXPLODED VIEWS AND PART LISTS

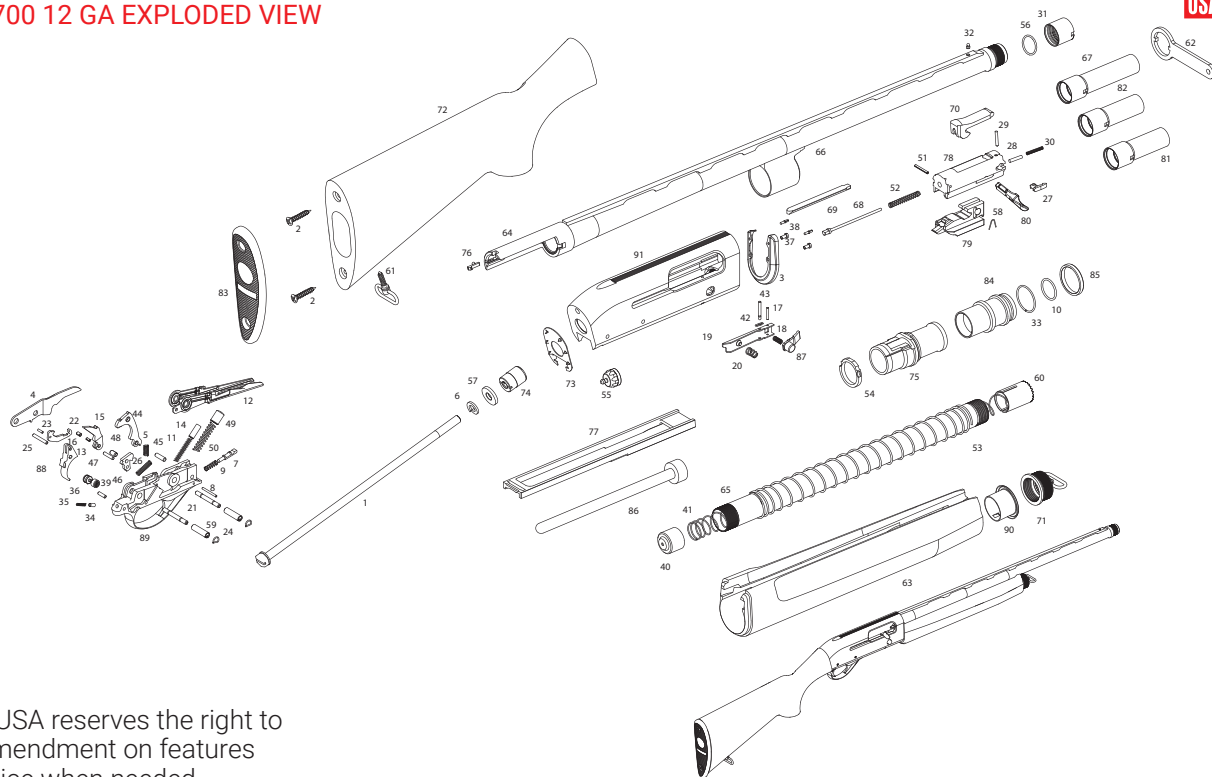
8.1. MAGIC 12 GA EXPLODED VIEW



Note: SAR USA reserves the right to make an amendment on features without notice when needed.

NU	PART NAME	NU	PART NAME	NU	PART NAME
1	RECEIVER	35	TRIGGER SPRING	69	EXTRACTOR
2	LOCKING BLOCK SHOE	36	SEAR PIN	70	EXTRACTOR PIN
3	RECEIVER SHOCK ABSORBER	37	HAND SAFETY	71	EXTRACTOR PLUNGER
4	MAGAZINE SHELL LATCH	38	HAND SAFETY SPRING FOLLOWER	72	EXTRACTOR SPRING
5	MAGAZINE SHELL LATCH SPRING	39	HAND SAFETY SPRING RETAINING PIN	73	COCKING ROD
6	MAGAZINE CUT-OFF BUTTON	40	HAND SAFETY SPRING	74	FOREND
7	MAGAZINE CUT-OFF BUTTON PIN	41	AUTOMATIC SAFETY SPRING	75	FOREND REAR SUPPORT
8	MAGAZINE CUT-OFF BUTTON SPRING	42	TRIGGER PLATE PIN	76	FOREND FRONT SUPPORT SHIM
9	MAGAZINE SHELL LATCH PIN	43	TRIGGER PLATE PIN	77	FOREND FRONT SUPPORT
10	LATCH PIN RETAINING SPRING	44	MAGAZINE TUBE	78	FOREND FRONT SUPPORT GUIDE
11	STOCK MOUNTING NUT/RECEIVER STUD	45	MAGAZINE SPRING RETAINER	79	FOREND FRONT SUPPORT RING
12	TRIGGER GUARD	46	MAGAZINE SPRING	80	FOREND FRONT SUPPORT WASHER
13	HAMMER	47	MAGAZINE FOLLOWER	81	CYLINDER RUBBER GUIDE
14	HAMMER SPRING	48	PISTON	82	MAGAZINE TUBE CAP/FOREND CAP
15	HAMMER SPRING FOLLOWER	49	PISTON COMPRESSION RING	83	STOCK SWIVEL
16	CARRIER LOCK	50	PISTON RING	84	SWIVEL SCREW
17	CARRIER LOCK PIN SPRING	51	COCKING ROD SUPPORT	85	STOCK
18	CARRIER LOCK PIN	52	ACTION SPRING	86	STOCK FASTENING ROD/STOCK BOLT
19	HAMMER PIN	53	SUPPORT SHOCK ABSORBER	87	BUTTPLATE/RECOIL PAD
20	CARRIER	54	CYLINDER RUBBER GUIDE	88	BUTTPLATE SCREW/RECOIL PAD SCREW
21	BREECH BLOCK LATCH	55	BARREL	89	STOCK MOUNTING WASHER/STOCK BOLT WASHER
22	BREECH BLOCK LATCH PIN	56	BARREL EXTENSION	90	STOCK BOLT SPRING WASHER
23	BREECH BLOCK LATCH INTERNAL PIN	57	EJECTOR	91	STOCK SWIVEL SCREW HOUSE
24	TRIGGER GUARD PIN BUSHING	58	RIB	92	SLING
25	TRIGGER GUARD PIN BUSHING SPRING	59	GAS CYLINDER	93	CHOKE TUBE, FULL
26	CARRIER MAINSPRING	60	FRONT SIGHT	94	CHOKE TUBE, IMPROVED MODIFIED
27	BREECH BLOCK LATCH SPRING FOLLOWER	61	BREECH BLOCK	95	CHOKE TUBE, MODIFIED
28	TRIGGER	62	BREECH BLOCK SLIDE	96	CHOKE TUBE, IMPROVED CYLINDER
29	TRIGGER PIN	63	OPERATING HANDLE	97	CHOKE TUBE, CYLINDER
30	SEAR	64	LOCKING BLOCK	98	STOCK DROP SHIM #50
31	TRIGGER ARM	65	FIRING PIN	99	STOCK DROP SHIM #55
32	TRIGGER ARM PIN	66	FIRING PIN STOP	100	STOCK DROP SHIM #60
33	AUTOMATIC SAFETY LEVER	67	FIRING PIN SPRING	101	STOCK DROP SHIM #65
34	SEAR SPRING PIN	68	OPERATING HANDLE SPRING		

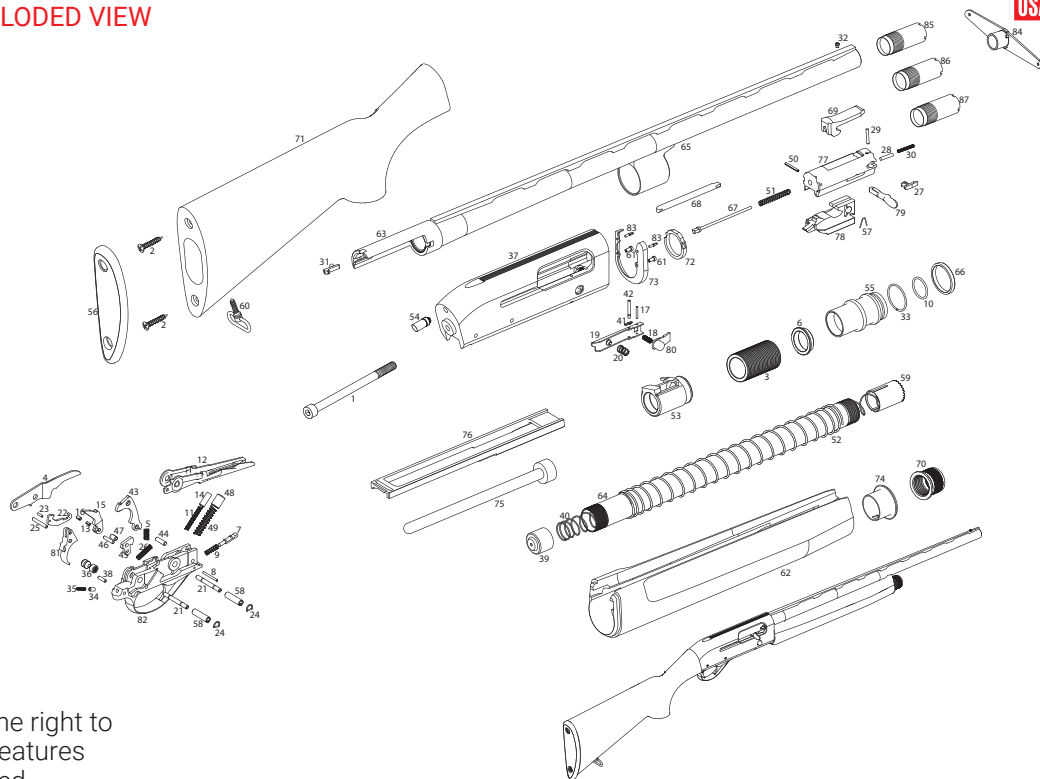
8.2. SA-W 700 12 GA EXPLODED VIEW



Note: SAR USA reserves the right to make an amendment on features without notice when needed.

NU	PART NAME	NU	PART NAME	NU	PART NAME
1	STOCK FASTENING ROD	32	FRONT SIGHT	62	CHOKE TUBE WRENCH
2	BUTT PLATE SCREW	33	PISTON RING	63	FOREND
3	FOREND REAR SUPPORT	34	HAND SAFETY SPRING FOLLOWER	64	BARREL EXTENSION
4	AUTOMATIC SAFETY LEVER	35	HAND SAFETY SPRING	65	MAGAZINE TUBE
5	AUTOMATIC SAFETY SPRING	36	HAND SAFETY	66	BARREL
6	STOCK BOLT SPRING WASHER	37	FOREND REAR SUPPORT SCREW	67	CHOKE TUBE, FULL
7	CARRIER LOCK	38	FOREND DOWEL	68	FIRING PIN
8	CARRIER LOCK PIN	39	HAND SAFETY SPRING RETAINING PIN	69	LOCKING BLOCK SHOE
9	CARRIER LOCK PIN SPRING	40	MAGAZINE FOLLOWER	70	LOCKING BLOCK
10	CYLINDER RUBBER GUIDE	41	MAGAZINE SPRING	71	MAGAZINE TUBE CAP
11	CARRIER MAINSPRING	42	LATCH PIN RETAINING SPRING	72	STOCK
12	CARRIER	43	MAGAZINE SHELL LATCH PIN	73	STOCK BUFFER
13	BREECH BLOCK LATCH INTERNAL PIN	44	HAMMER	74	RECEIVER STUD
14	BREECH BLOCK LATCH SPRING FOLLOWER	45	HAMMER PIN	75	COCKING ROD SUPPORT
15	BREECH BLOCK LATCH	46	SEAR	76	EJECTOR
16	BREECH BLOCK LATCH PIN	47	SEAR PIN	77	COCKING ROD
17	MAGAZINE CUT-OFF BUTTON PIN	48	SEAR SPRING PIN	78	BREECH BLOCK
18	MAGAZINE CUT-OFF BUTTON SPRING	49	HAMMER SPRING FOLLOWER	79	BREECH BLOCK SLIDE
19	MAGAZINE SHELL LATCH	50	HAMMER SPRING	80	OPERATING HANDLE
20	MAGAZINE SHELL LATCH SPRING	51	FIRING PIN STOP	81	CHOKE TUBE, IMPROVED MODIFIED
21	TRIGGER PLATE PIN	52	FIRING PIN SPRING	82	CHOKE TUBE, MODIFIED
22	TRIGGER ARM	53	ACTION SPRING	83	BUTT PLATE
23	TRIGGER ARM PIN	54	SUPPORT SHOCK ABSORBER	84	PISTON
24	TRIGGER GUARD PIN BUSHING SPRING	55	RECEIVER SHOCK ABSORBER	85	PISTON COMPRESSION RING
25	TRIGGER PIN	56	CHOKE TUBE RUBBER RING	86	PLUG REDUCER
26	TRIGGER SPRING	57	STOCK MOUNTING RING	87	MAGAZINE CUT-OFF BUTTON
27	EXTRACTOR	58	OPERATING HANDLE SPRING	88	TRIGGER
28	EXTRACTOR PLUNGER	59	TRIGGER GUARD PIN BUSHING	89	TRIGGER GUARD
29	EXTRACTOR PIN	60	MAGAZINE SPRING RETAINER	90	FOREND FRONT SUPPORT
30	EXTRACTOR SPRING	61	STOCK SWIVEL	91	RECEIVER
31	CHOKE CAP				

8.3. SA-W 700 20 GA EXPLODED VIEW

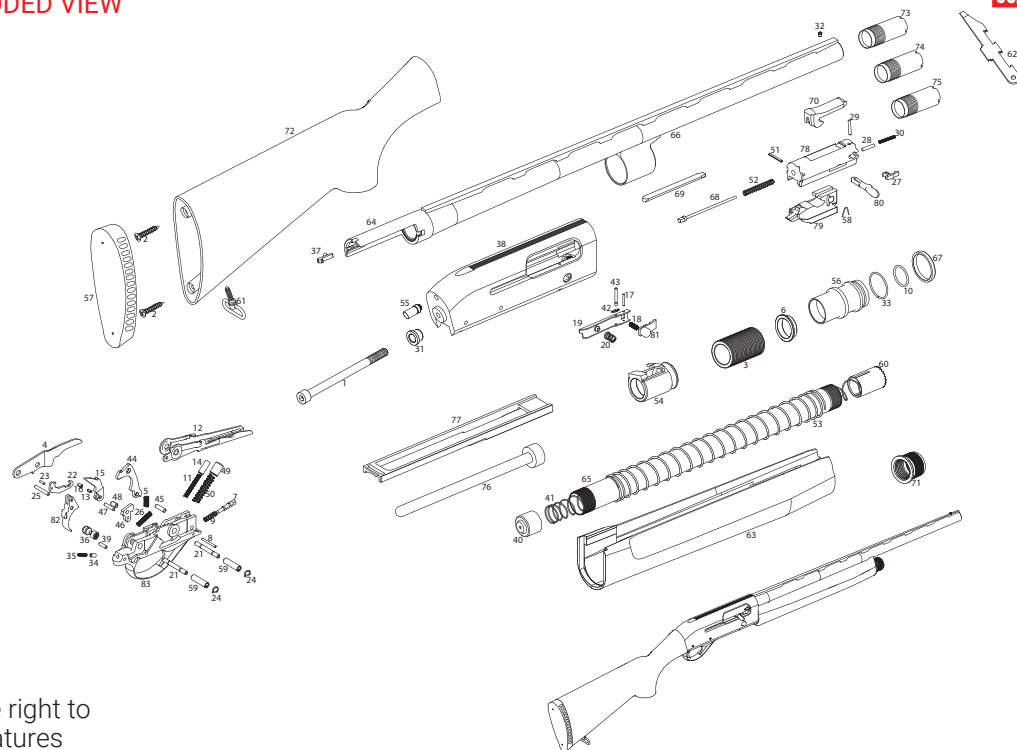


Note: SAR USA reserves the right to make an amendment on features without notice when needed.

PART LIST

NU	PART NAME	NU	PART NAME	NU	PART NAME
1	STOCK FASTENING ROD	30	EXTRACTOR SPRING	59	MAGAZINE SPRING RETAINER
2	BUTTPLATE SCREW	31	EJECTOR	60	STOCK SWIVEL
3	PISTON ABSORBER	32	FRONT SIGHT	61	FOREND REAR SUPPORT SCREW
4	AUTOMATIC SAFETY LEVER	33	PISTON RING	62	FOREND
5	AUTOMATIC SAFETY SPRING	34	HAND SAFETY SPRING FOLLOWER	63	BARREL EXTENSION
6	PISTON ABSORBER SUPPORT	35	HAND SAFETY SPRING	64	MAGAZINE TUBE
7	CARRIER LOCK	36	HAND SAFETY	65	BARREL
8	CARRIER LOCK PIN	37	RECEIVER	66	PISTON COMPRESSION RING
9	CARRIER LOCK PIN SPRING	38	HAND SAFETY SPRING RETAINING PIN	67	FIRING PIN
10	CYLINDER RUBBER GUIDE	39	MAGAZINE FOLLOWER	68	LOCKING BLOCK SHOE
11	CARRIER MAINSPRING	40	MAGAZINE SPRING	69	LOCKING BLOCK
12	CARRIER	41	LATCH PIN RETAINING SPRING	70	MAGAZINE TUBE CAP
13	BREECH BLOCK LATCH INTERNAL PIN	42	MAGAZINE SHELL LATCH PIN	71	STOCK
14	BREECH BLOCK LATCH SPRING FOLLOWER	43	HAMMER	72	SUPPORT SHOCK ABSORBER
15	BREECH BLOCK LATCH	44	HAMMER PIN	73	FOREND REAR SUPPORT
16	BREECH BLOCK LATCH PIN	45	SEAR	74	FOREND FRONT SUPPORT
17	MAGAZINE CUT-OFF BUTTON PIN	46	SEAR PIN	75	PLUG REDUCER
18	MAGAZINE CUT-OFF BUTTON SPRING	47	SEAR SPRING PIN	76	COCKING ROD
19	MAGAZINE SHELL LATCH	48	HAMMER SPRING FOLLOWER	77	BREECH BLOCK
20	MAGAZINE SHELL LATCH SPRING	49	HAMMER SPRING	78	BREECH BLOCK SLIDE
21	TRIGGER PLATE PIN	50	FIRING PIN STOP	79	OPERATING HANDLE
22	TRIGGER ARM	51	FIRING PIN SPRING	80	MAGAZINE CUT-OFF BUTTON
23	TRIGGER ARM PIN	52	ACTION SPRING	81	TRIGGER
24	TRIGGER GUARD PIN BUSHING SPRING	53	COCKING ROD SUPPORT	82	TRIGGER GUARD
25	TRIGGER PIN	54	RECEIVER SHOCK ABSORBER	83	FOREND DOWEL
26	TRIGGER SPRING	55	PISTON	84	CHOKE TUBE WRENCH
27	EXTRACTOR	56	BUTTPLATE	85	CHOKE TUBE, FULL
28	EXTRACTOR PLUNGER	57	OPERATING HANDLE SPRING	86	CHOKE TUBE, IMPROVED MODIFIED
29	EXTRACTOR PIN	58	TRIGGER GUARD PIN BUSHING	87	CHOKE TUBE, MODIFIED

8.4. SA-X 700 20 GA EXPLODED VIEW



Note: SAR USA reserves the right to make an amendment on features without notice when needed.

NU PART NAME

1	STOCK FASTENING ROD
2	BUTTPATE SCREW/RECOIL PAD SCREW
3	PISTON ABSORBER
4	AUTOMATIC SAFETY LEVER
5	AUTOMATIC SAFETY SPRING
6	PISTON ABSORBER SUPPORT
7	CARRIER LOCK
8	CARRIER LOCK PIN
9	CARRIER LOCK PIN SPRING
10	CYLINDER RUBBER GUIDE
11	CARRIER MAINSPRING
12	CARRIER
13	BREECH BLOCK LATCH INTERNAL PIN
14	BREECH BLOCK LATCH SPRING FOLLOWER
15	BREECH BLOCK LATCH
16	BREECH BLOCK LATCH PIN
17	MAGAZINE CUT-OFF BUTTON PIN
18	MAGAZINE CUT-OFF BUTTON SPRING
19	MAGAZINE SHELL LATCH
20	MAGAZINE SHELL LATCH SPRING
21	TRIGGER PLATE PIN
22	TRIGGER ARM
23	TRIGGER ARM PIN
24	TRIGGER GUARD PIN BUSHING SPRING
25	TRIGGER PIN
26	TRIGGER SPRING
27	EXTRACTOR
28	EXTRACTOR PLUNGER

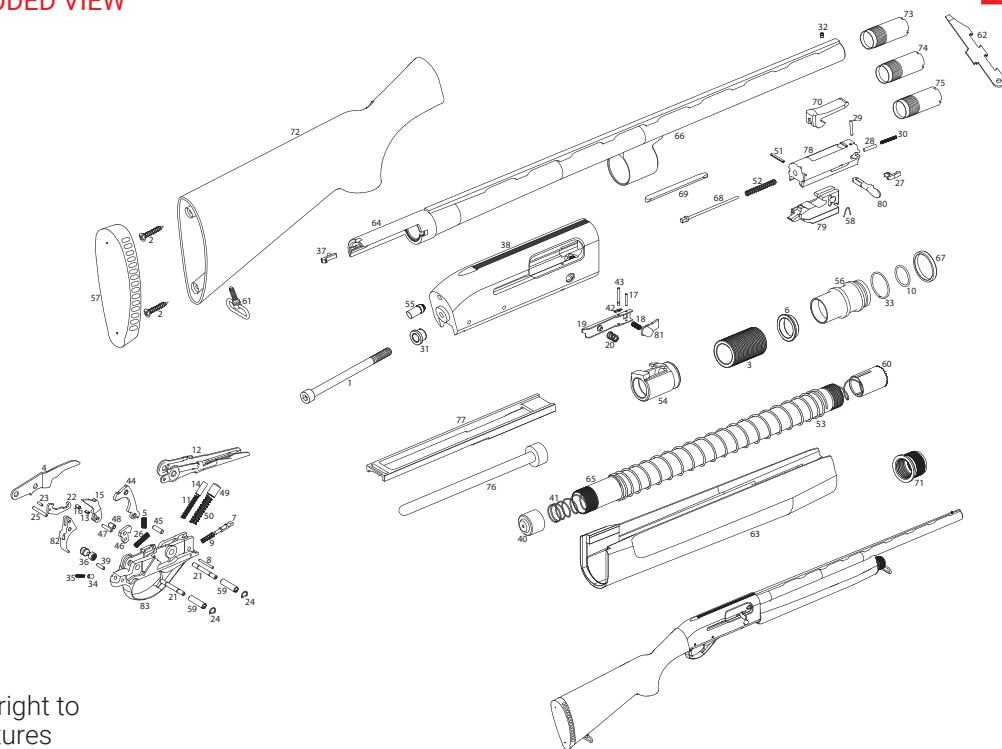
NU PART NAME

29	EXTRACTOR PIN
30	EXTRACTOR SPRING
31	STOCK MOUNTING WASHER
32	FRONT SIGHT
33	PISTON RING
34	HAND SAFETY SPRING FOLLOWER
35	HAND SAFETY SPRING
36	HAND SAFETY
37	EJECTOR
38	RECEIVER
39	HAND SAFETY SPRING RETAINING PIN
40	MAGAZINE FOLLOWER
41	MAGAZINE SPRING
42	LATCH PIN RETAINING SPRING
43	MAGAZINE SHELL LATCH PIN
44	HAMMER
45	HAMMER PIN
46	SEAR
47	SEAR PIN
48	SEAR SPRING PIN
49	HAMMER SPRING FOLLOWER
50	HAMMER SPRING
51	FIRING PIN STOP
52	FIRING PIN SPRING
53	ACTION SPRING
54	COCKING ROD SUPPORT
55	RECEIVER SHOCK ABSORBER
56	PISTON

NU PART NAME

57	BUTTPATE/RECOIL PAD
58	OPERATING HANDLE SPRING
59	TRIGGER GUARD PIN BUSHING
60	MAGAZINE SPRING RETAINER
61	STOCK SWIVEL
62	CHOKE TUBE WRENCH
63	FOREND
64	BARREL EXTENSION
65	MAGAZINE TUBE
66	BARREL
67	PISTON COMPRESSION RING
68	FIRING PIN
69	LOCKING BLOCK SHOE
70	LOCKING BLOCK
71	MAGAZINE TUBE CAP
72	STOCK
73	CHOKE TUBE, FULL
74	CHOKE TUBE, IMPROVED MODIFIED
75	CHOKE TUBE, MODIFIED
76	PLUG REDUCER
77	COCKING ROD
78	BREECH BLOCK
79	BREECH BLOCK SLIDE
80	OPERATING HANDLE
81	MAGAZINE CUT-OFF BUTTON
82	TRIGGER
83	TRIGGER GUARD

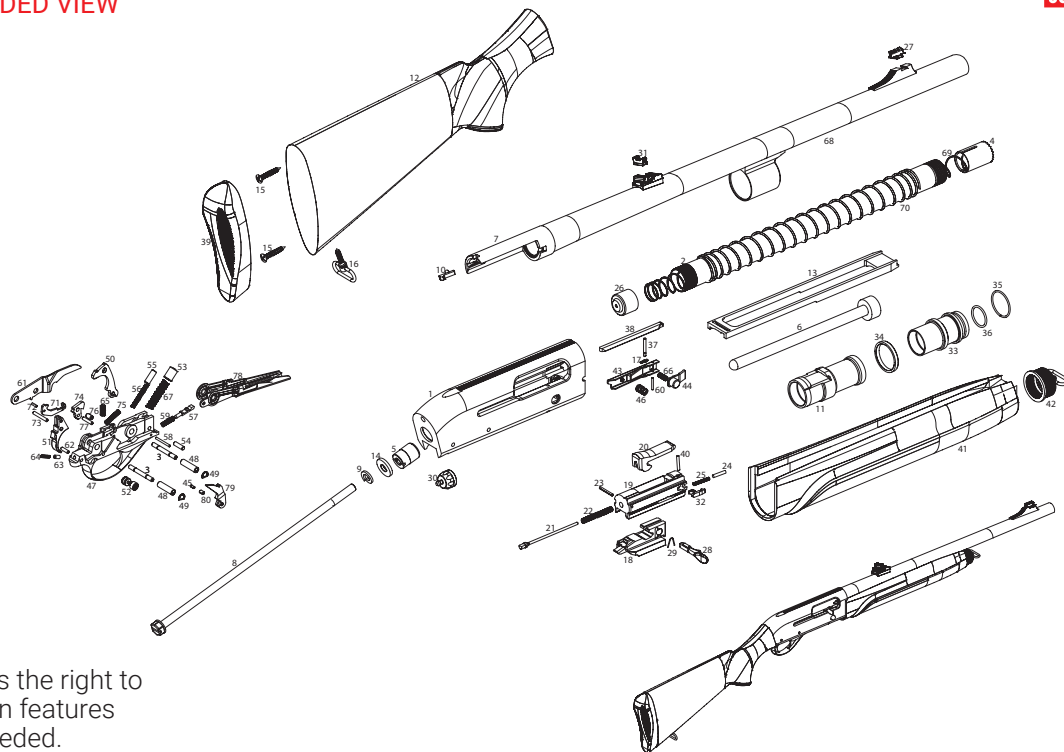
8.5. SA-X 700 YOUTH EXPLODED VIEW



Note: SAR USA reserves the right to make an amendment on features without notice when needed.

NU	PART NAME	NU	PART NAME	NU	PART NAME
1	STOCK FASTENING ROD	29	EXTRACTOR PIN	57	RECOIL PAD
2	RECOIL PAD SCREW	30	EXTRACTOR SPRING	58	OPERATING HANDLE SPRING
3	PISTON ABSORBER	31	STOCK MOUNTING WASHER	59	TRIGGER GUARD PIN BUSHING
4	AUTOMATIC SAFETY LEVER	32	FRONT SIGHT	60	MAGAZINE SPRING RETAINER
5	AUTOMATIC SAFETY SPRING	33	PISTON RING	61	STOCK SWIVEL
6	PISTON ABSORBER SUPPORT	34	HAND SAFETY SPRING FOLLOWER	62	CHOKE TUBE WRENCH
7	CARRIER LOCK	35	HAND SAFETY SPRING	63	FOREND
8	CARRIER LOCK PIN	36	HAND SAFETY	64	BARREL EXTENSION
9	CARRIER LOCK PIN SPRING	37	EJECTOR	65	MAGAZINE TUBE
10	CYLINDER RUBBER GUIDE	38	RECEIVER	66	BARREL
11	CARRIER MAINSPRING	39	HAND SAFETY SPRING RETAINING PIN	67	PISTON COMPRESSION RING
12	CARRIER	40	MAGAZINE FOLLOWER	68	FIRING PIN
13	BREECH BLOCK LATCH INTERNAL PIN	41	MAGAZINE SPRING	69	LOCKING BLOCK SHOE
14	BREECH BLOCK LATCH SPRING FOLLOWER	42	LATCH PIN RETAINING SPRING	70	LOCKING BLOCK
15	BREECH BLOCK LATCH	43	MAGAZINE SHELL LATCH PIN	71	MAGAZINE TUBE CAP
16	BREECH BLOCK LATCH PIN	44	HAMMER	72	STOCK
17	MAGAZINE CUT-OFF BUTTON PIN	45	HAMMER PIN	73	CHOKE TUBE, FULL
18	MAGAZINE CUT-OFF BUTTON SPRING	46	SEAR	74	CHOKE TUBE, IMPROVED MODIFIED
19	MAGAZINE SHELL LATCH	47	SEAR PIN	75	CHOKE TUBE, MODIFIED
20	MAGAZINE SHELL LATCH SPRING	48	SEAR SPRING PIN	76	PLUG REDUCER
21	TRIGGER PLATE PIN	49	HAMMER SPRING FOLLOWER	77	COCKING ROD
22	TRIGGER ARM	50	HAMMER SPRING	78	BREECH BLOCK
23	TRIGGER ARM PIN	51	FIRING PIN STOP	79	BREECH BLOCK SLIDE
24	TRIGGER GUARD PIN BUSHING SPRING	52	FIRING PIN SPRING	80	OPERATING HANDLE
25	TRIGGER PIN	53	ACTION SPRING	81	MAGAZINE CUT-OFF BUTTON
26	TRIGGER SPRING	54	COCKING ROD SUPPORT	82	TRIGGER
27	EXTRACTOR	55	RECEIVER SHOCK ABSORBER	83	TRIGGER GUARD
28	EXTRACTOR PLUNGER	56	PISTON		

8.6. SA-X 700 R EXPLODED VIEW



Note: SAR USA reserves the right to make an amendment on features without notice when needed.

PART LIST

NU PART NAME

1	RECEIVER
2	MAGAZINE TUBE
3	TRIGGER PLATE PIN
4	MAGAZINE SPRING RETAINER
5	RECEIVER STUD
6	PLUG REDUCER
7	BARREL EXTENSION
8	STOCK FASTENING ROD
9	STOCK BOLT SPRING WASHER
10	EJECTOR
11	COCKING ROD SUPPORT
12	STOCK
13	COCKING ROD
14	STOCK MOUNTING RING
15	RECOIL PAD SCREW
16	STOCK SWIVEL
17	LATCH PIN RETAINING SPRING
18	BREECH BLOCK SLIDE
19	BREECH BLOCK
20	LOCKING BLOCK
21	FIRING PIN
22	FIRING PIN SPRING
23	FIRING PIN STOP
24	EXTRACTOR PLUNGER
25	EXTRACTOR SPRING
26	MAGAZINE FOLLOWER
27	FIBER OPTIC FRONT SIGHT

NU PART NAME

28	OPERATING HANDLE
29	OPERATING HANDLE SPRING
30	RECEIVER SHOCK ABSORBER
31	ADJUSTABLE REAR SIGHT
32	EXTRACTOR
33	PISTON
34	PISTON COMPRESSION RING
35	PISTON RING
36	CYLINDER RUBBER GUIDE
37	MAGAZINE SHELL LATCH PIN
38	LOCKING BLOCK SHOE
39	RECOIL PAD
40	EXTRACTOR PIN
41	FOREND
42	MAGAZINE TUBE CAP
43	MAGAZINE SHELL LATCH
44	MAGAZINE CUT-OFF BUTTON
45	BREECH BLOCK LATCH INTERNAL PIN
46	MAGAZINE SHELL LATCH SPRING
47	TRIGGER GUARD
48	TRIGGER GUARD PIN BUSHING
49	TRIGGER GUARD PIN BUSHING SPRING
50	HAMMER
51	TRIGGER
52	HAND SAFETY
53	HAMMER SPRING FOLLOWER
54	HAMMER PIN

NU PART NAME

55	BREECH BLOCK LATCH SPRING FOLLOWER
56	CARRIER MAINSPRING
57	CARRIER LOCK
58	CARRIER LOCK PIN
59	CARRIER LOCK PIN SPRING
60	MAGAZINE CUT-OFF BUTTON PIN
61	AUTOMATIC SAFETY LEVER
62	HAND SAFETY SPRING RETAINING PIN
63	HAND SAFETY SPRING FOLLOWER
64	HAND SAFETY SPRING
65	AUTOMATIC SAFETY SPRING
66	MAGAZINE CUT-OFF BUTTON SPRING
67	HAMMER SPRING
68	BARREL
69	MAGAZINE SPRING
70	ACTION SPRING
71	TRIGGER ARM
72	TRIGGER ARM PIN
73	TRIGGER PIN
74	SEAR
75	TRIGGER SPRING
76	SEAR SPRING PIN
77	SEAR PIN
78	CARRIER
79	BREECH BLOCK LATCH
80	BREECH BLOCK LATCH PIN

9. ASPECTS WHICH ARE CONSIDERED OUTSIDE THE SCOPE OF WARRANTY

1. Disregarding the rules that are specified in the user manual of your shotgun will void the warranty.
2. Shotguns have a relatively large bore. As such, extra precaution must be taken to avoid accidental barrel obstruction from foreign objects. Barrels with "pressure swells" will not be covered under warranty as an obstructed barrel must be considered a user-caused issue.
3. Chokes must be installed correctly, tightly and used with appropriate ammunition for their designated restriction amount.
4. Water damage can occur, especially in regards to wooden stocks and forends and unprotected metal surfaces. Keep your firearm clean and dry. If your firearm becomes wet for any reason, it is recommended you completely disassemble, clean, lubricate and re-assemble according to manufacturer instructions.
5. Use only high quality cleaning and lubrication chemicals. Remove all cleaning agents thoroughly and make sure to lubricate all metal surfaces according to the manufacturers instructions.
6. Only use factory ammunition. Remanufactured or reloaded ammunition will void warranty.
7. Only use steel shot ammunition with appropriate chokes.
8. Never shoot shotgun with the stock removed!
9. Don't use vegetable or animal oil for the maintenance of your shotgun under any circumstances.

⚠ WARNING

PLEASE FOLLOW THE RULES STATED ABOVE. IF NOT FOLLOWED AND THERE IS A FAILURE, THE SHOTGUN WARRANTY WILL BE VOID.

NOTE:

1-877-SAR-GUNS
1-877-727- 4867
www.sarusa.com