

OVER & UNDER SHOTGUNS

SAR★USA
by **SARSILMAZ**



- PLATINUM
- SP-XS 512
- SP-WS 512

USER MANUAL
MAINTENANCE & SPARE PARTS LIST

MODEL

- PLATINUM
- SP-XS 512
- SP-WS 512

SUB MODEL

Over & Under Shotgun

 **WARNING**

SARSILMAZ disclaims any and all liability arising out of the use of any SARSILMAZ products (i) contrary to instructions or regulations; (ii) without caution; (iii) by any parties other than the license holder; (iv) through making unauthorized or illegal modifications thereon; (v) utilizing non-standard or out of spec cartridges; (vi) under maintenance or repair services rendered by unauthorized persons; or (vii) under any similar conditions whatsoever. SARSILMAZ excludes all liability for any injuries or property damages arising from the malicious or negligent use of products.

 **WARNING**

All pictures, photos and definitions in this Manual are provided only for information purposes. Manufacturer reserves its right to apply changes to any models any time without prior notice as deemed necessary for improving the products or in line with any manufacturing or commercial requirements.

BEING MANUFACTURED WITH THE ASSURANCE OF
INDUSTRIAL
QUALITY CONTROL CERTIFICATE IN TURKEY TS EN ISO
9001:2008
QUALITY CERTIFICATE
AND TSE MANUFACTURING SUFFICIENCY CERTIFICATE

SARSILMAZ®

IS A POWER BRAND

CONTENTS

1. GENERAL PRECAUTIONS	6	5. MAINTENANCE AND CLEANING	25
2. GENERAL SAFETY RULES	7	5.1. DISASSEMBLING THE SHOTGUN	25
3. PRODUCT AND FEATURES IDENTIFICATION	12	5.2. MAINTENANCE AND CLEANING OF THE SHOTGUN	27
3.1. SUPPLIED COMPONENTS	12	5.3. ASSEMBLING THE SHOTGUN	28
3.2. MAIN FEATURES OF THE PRODUCT	12	5.4. FUNCTION CONTROL	28
3.3. BASIC PARTS.....	14	6. ASSEMBLY OF ADDITIONAL EQUIPMENT	29
3.4. TECHNICAL DATA and FEATURES.....	15	6.1. INTENDED USE OF CHOKES.....	29
4. PUTTING YOUR PRODUCT INTO SERVICE	16	6.2. INSTALLATION AND REMOVAL OF CHOKES.....	30
4.1. PRELIMINARY PREPERATION	16	6.3. CLEANING AND LUBRICATING THE CHOKE	30
4.1.1. USE OF SAFETY	16	7. TROUBLESHOOTING.....	31
4.1.2. USE OF SELECTOR.....	16	8. OVER & UNDER EXPLODED WIEV	32
4.1.3. USE OF TRIGGER.....	17	9. ASPECTS WHICH WILL BE CONSIDERE OUTSIDE THE SCOPE OF WARRANTY.....	34
4.2. ASSEMBLY OF THE SHOTGUN.....	17		
4.3. CHECKING THE SHOTGUN.....	20		
4.4. AMMUNITION.....	20		
4.5. FIRING.....	20		
4.5.1. CONTROLS AND SAFETY BEFORE SHOOTING.....	20		
4.5.2. LOADING AND INSTALLING THE SHOTGUN AND ESTABLISHING A BORESIGHT	21		
4.5.3. FIRING.....	22		
4.5.4. UNLOADING THE SHOTGUN	23		
4.6. SECURING THE SHOTGUN	24		
4.6.1. RELEASING THE HAMMERS.....	24		

1. GENERAL PRECAUTIONS

Read the instructions and warnings in this manual carefully before handling SARSILMAZ products for any purposes.

As a prerequisite for the putting of SARSILMAZ products into service and the safety requirements in their use, cleaning and maintenance, you must be familiar with and follow exactly all information provided in this manual. Please do not use the product unless you read the instructions for safety and use thoroughly and carefully. If you need any further information please consult your dealer or the factory.

Please observe the laws of your region or your country governing the purchasing, handling and use of firearms.

All firearms are dangerous. Therefore, your product is sold to you provided that you comply with all instructions for use and SARSILMAZ disclaims in advance any and all responsibility for any technical damage or other consequences whatsoever that may be caused by the misuse of the product, including any harm or injury or property damage arising in relation to the following

- Always keep the muzzle pointed in a safe direction.
- Firearms should be unloaded and secured when not actually in use.
- Do not rely on your firearm's safety.
- Be sure of your target and what's beyond it.
- Make sure that your ammunition matches the caliber or gauge of your gun.
- If your pistol fails to fire when the trigger is pulled, handle with care.
- It is your responsibility to ensure that you are in compliance with all applicable laws and ordinances regarding the use of your firearm.
- Other factors directly or indirectly of beyond our control.

2. GENERAL SAFETY RULES

2.1. STRICTLY AVOID AIMING THE GUN AT SOMETHING, SHOOTING OF WHICH IS NOT SAFE.

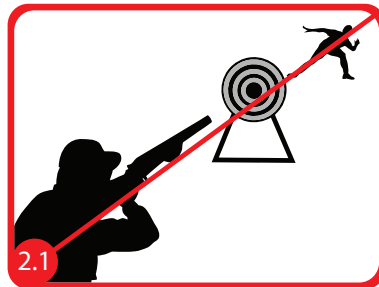
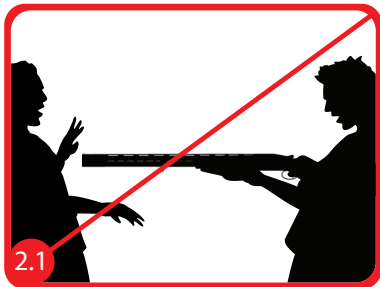
Don't direct the gun's barrel to your own body or someone else's body. This is significant particularly when you are loading and unloading the gun. When you shoot at a target, be careful about what is behind the target. If you miss or hit the target, ensuring that the shoot doesn't lead to an unexpected injury or damage is under your responsibility.

2.2. ALWAYS ACT AS IF THE GUN IS LOADED.

Never assume that the gun is empty. In order to determine whether there is any magazine in the shit-guns, you must check the magazine rest and magazine tube. You can understand whether your rifle is full only in this way.

2.3. HIDE YOUR RIFLE SO THAT CHILDREN DON'T HAVE ANY ACCESS

Access of children under the age of 18 an other unauthorized person to your rifle is under your responsibility. Please unload your gun in order to reduce the risk of accidents involving children. Lock the rifle and keep the ammunition locked at a separate place.



2.4. DON'T SHOOT AT WATER OR A HARD SURFACE

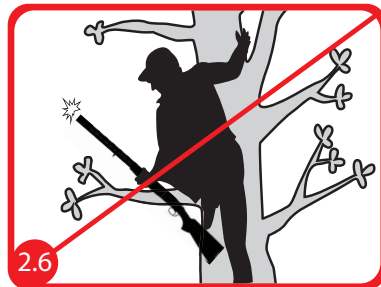
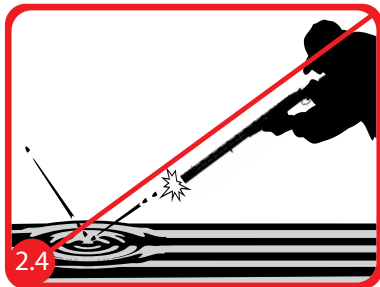
Shooting at the water or a hard surface causes the drop shot to change direction unexpectedly, as a result of which you or people around you might get injured.

2.5. KNOW THE SAFETY FEATURE OF THE GUN YOU ARE USING; HOWEVER, DON'T FORGET THAT SAFETY DEVICES CAN'T TAKE THE PLACE OF SAFE USAGE PROCEDURES.

Don't rely solely on the safety tool in terms of preventing the accidents. It is essential that you know the safety features of the gun you are using; accidents can be prevented best by complying with the safety rules and safe usage procedures defined in the product manual. Accidents are always a result of not complying with basic safety rules.

2.6. NEVER CLIMB A TREE, FENCE OR A SET WITH A LOADED GUN.

Before climbing up or down a tree or climbing a fence or jumping off a dike or a set, open your gun, unload the magazine and lock the hand safety. Don't push towards yourself or someone else or push it with a loaded gun.



2.7. PERFOR PROPER MAINTENANCE OF YOUR GUN.

Keep your gun in its bag so that dirt or dust doesn't accumulate on the operating parts. Clean and lubricate your gun in accordance with the instructions in the use manual in order to prevent barrel damage and contamination, since you will need to use it in case of emergency. Always make sure that the barrel is clean (purged of cloggings such as dirt, mud, oil, magazine, magazine residue) before loading the barrel. Firing the gun despite the clogging might cause the barrel to swell and you or people near you to get injured.

If you hear a strange sun when you fire the gun, stop the shooting operation immediately, activate the safety and unload the gun. Make sure that chamber and the barrel is not clogged, and the magazine is not stuck in the gun due to use of incorrect or improper ammunition.

2.8. ALWAYS WEAR SAFETY GOGGLES AND HEADPHONES.

Back blast of gas, gun powder and metal parts and their injuring the shooter is an improbable possibility, but unprevented injuries that occur in such cases that cover visual loss are serious. The shooter must always use an impact-resistant shooting goggle when firing the gun. The goggles will help to minimize the hearing damage that stems from the shooting process.

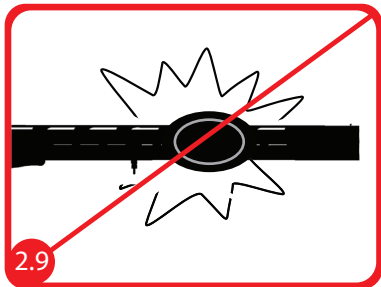


2.9. USE PROPER AMMUNITION.

Only use factory filled, industrial type, newly manufactured magazines. Make sure that each magazine you use is in accordance with the calibre and type of the gun. Calibre of the gun is clearly specified on the barrel. Refilled or reproduced magazines might increase the potential magazine pressure, cartridge head leap and other defects, which might damage your gun, injure you or people around you. Don't use magazines, which are longer than magazine rest. This poses a danger for the shooter as well as the gun.

2.10. AVOID CONSUMING ALCOHOLIC DRINKS OR drugs THAT WEAKEN THOUGHTS AND REFLEXES.

Don't shoot the gun after consuming alcohol. If you are using any drug that weakens reflexes and thoughts, don't use the gun when you are under the effect of the drug.



2.11. DON'T TRANSPORT THE GUN WHEN IT IS LOADED.

Unload the shotgun before putting it in a car. (magazine rest is empty). Hunters and target shooters must load their shotguns when they reach their destinations. If you are carrying a gun for self-protection purposes, keep the magazine rest empty in case of accidental firing.

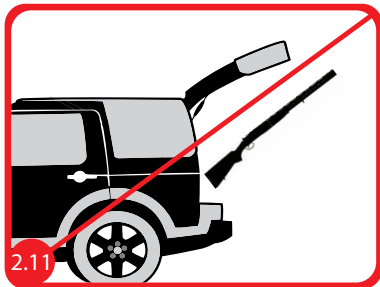
2.12. MAKE SURE THAT YOU KNOW THE OPERATION MODES OF THE SHOTGUN VERY WELL BEFORE USING OR LOADING IT.

2.13. THE SHOTGUN MUST BE REPAIRED ONLY AT AUTHORIZED SERVICES.

2.14. MAKING MECHANICAL MODIFICATIONS ON THE PARTS OF THE SHOTGUN IS DANGEROUS AND PROHIBITED. DON'T FORGET THAT PRODUCTS SUBJECTED TO SUCH OPERATIONS WILL BE OUTSIDE THE WARRANTY SCOPE.

2.15. THE PERSON USING THE SHOTGUN MUST BE AT 2 METERS DISTANT TO OTHER PERSONS MINIMUM.

The person using the shotgun must be 2 meters distant to other persons minimum for safety reasons. When carrying your shotgun, don't forget that leaping the barrel position upwards is of vital importance for your and people around you.



3. PRODUCT AND FEATURES IDENTIFICATION

3.1. SUPPLIED COMPONENTS

The parts, which are included to the product packaging are as follows;

- 1 Shotgun Carrier Bag
- 1 Shotgun
- 1 Use and Maintenance Manual
- 5 Chokes
- 1 Choke Wrench



3.2. MAIN FEATURES OF THE PRODUCT

Steadfast shotgun are manufactured with state-of-the-art technology in accordance with the experiences gained in the production of modern small arms suitable for using in shooting sports police, military and civil environments. Your shotgun belongs to the ungrooved shotgun series, which are equipped with barrels on the upper part and has a manual operation system.

The installation of the shotgun is performed by breaking the shotgun completely. With the broken barrel, needles are installed; the needles are released and explosion occurs as a result of trigger movement. Selector is a system which determines the explosion order of the barrels and operates with impact.

You can carry your shotgun safely thanks to the safety system of the rifle. Automatic activation control lever activates and brings your gun to safety position each time you set your shotgun. You must bring the safety to shooting position in order to fire your shotgun.

Identifying the target and shooting accurately is possible thanks to the ergonomic stock and fore-end. Stocks and fore-ends used in wooden models are made of high-quality walnut tree.

Wide top strip on your shotgun allows you to take aim at the target comfortably. Top strip are scanned in a flat and concave order so that they don't reflect the light. Ventilation ducts on the strips allows the barrel to cool off quickly.

Barrels are made of alloyed steel material and their inner walls are chromium-plated. Chromium allows the bullets and firing shots to move quickly and protects the inner section of the barrel against corrosive environments.

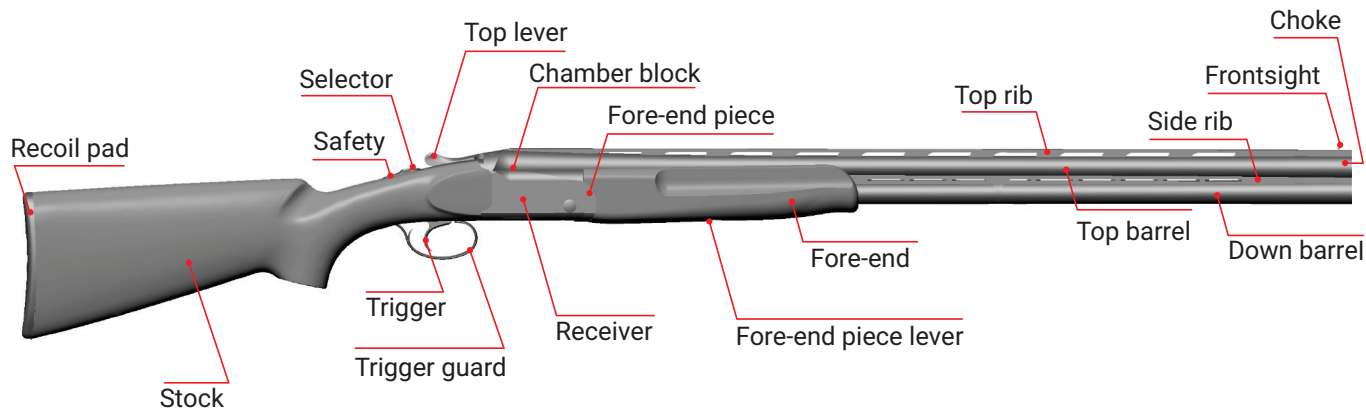
You can equip your shotgun with a shock. Shocks are intended for shotgun's firing shots to the required distance in an integrated manner. You can change the shocks according to the type of prey and competition conditions.

Ejector system allows you to remove the exploded magazines from the barrel after the shooting when you break the barrel. This is a user-friendly feature.

Sarsilmaz shotgun are preferred because of the ease of cleaning, handling and maintenance, their robust design and good control.

*****Use life of our products are 10 (ten) years.

3.3. BASIC PARTS



3.4. TECHNICAL DATA and FEATURES

MODEL	PLATINUM	SP-XS 512	SP-WS 512
CALIBER	12 GA	12 GA	12 GA
MECHANISM	O&U	O&U	O&U
GAUGE	3"- 76 mm	3"- 76 mm	3"- 76 mm
CAPACITY	2	2	2
BARREL LENGTH	24"- 61 cm 26"- 66 cm 28"- 71 cm 30"- 76 cm	24"- 61 cm 26"- 66 cm 28"- 71 cm 30"- 76 cm	24"- 61 cm 26"- 66 cm 28"- 71 cm 30"- 76 cm
OVERALL LENGTH	40.5" - 103 cm 43.3" - 110 cm 45.2" - 115 cm 47.2" - 120 cm	40.5" - 103 cm 43.3" - 110 cm 45.2" - 115 cm 47.2" - 120 cm	40.5" - 103 cm 43.3" - 110 cm 45.2" - 115 cm 47.2" - 120 cm
OVERALL HEIGHT	7.4" - 19 cm	7.4" - 19 cm	7.4" - 19 cm
WIDTH	1.9" - 5 cm	1.9" - 5 cm	1.9" - 5 cm
WEIGHT	107.6 oz - 3050 gr 109.3 oz - 3100 gr 111.1 oz - 3150 gr 112.9 oz - 3200 gr	107.6 oz - 3050 gr 109.3 oz - 3100 gr 111.1 oz - 3150 gr 112.9 oz - 3200 gr	111.1 oz - 3150 gr 112.9 oz - 3200 gr 114.6 oz - 3250 gr 116.4 oz - 3300 gr
SPECIFICATION	Stainless Steel Laser Marking & Acid Engraving Receiver * Oiled Turkish Walnut Stock and Forend LPA Green Fiber Optic Front Sight MC5 Shock	Stainless Steel Laser Marking Receiver Polymer Stock and Forend LPA Green Fiber Optic Front Sight MC5 Shock	Stainless Steel Laser Marking & Acid Engraving Receiver * Oiled Turkish Walnut Stock and Forend LPA Green Fiber Optic Front Sight MC5 Shock

4. PUTTING YOUR PRODUCT INTO SERVICE

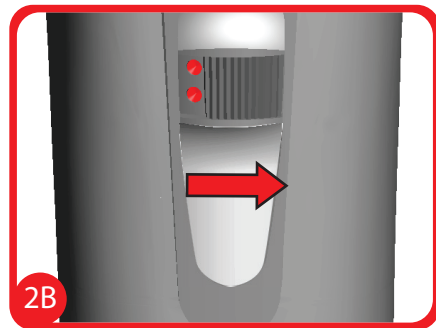
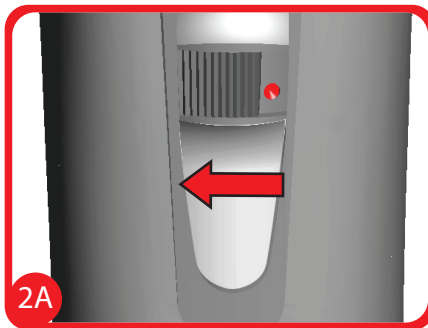
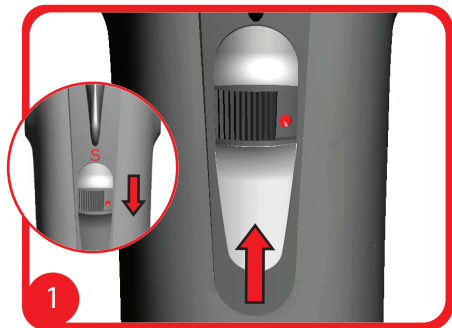
4.1. PRELIMINARY PREPERATION

4.1.1. USE OF SAFETY

Safety is located above the receiver. Safety moves back and forward. When the safety is at the back position, "S" letter is seen, which indicates that your shotgun is safe. (Figure 1)

4.1.2. USE OF SELECTOR

a. "S" letter is not seen when the safety is at forward position. In this case, your shotgun is ready for shooting. Selector button inside the safety primarily determines which barrel will fire. Display of a single point indicates the lower barrel will fire, display of double points indicates that upper barrel will fire. (Figure 2A) (Figure 2B)



- b. You can also select the barrel shooting order when your shotgun is at safety position. **(Figure 3A) (Figure 3B)**
- c. Your shotgun is equipped with AUTO-SAFETY (automatic safety system). When the barrel is opened, your shotgun will switch.

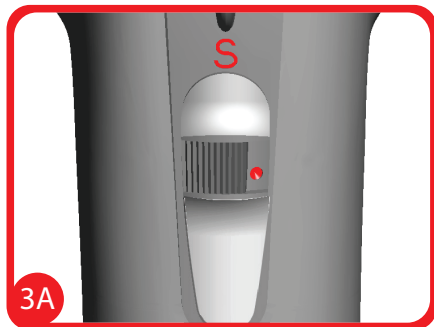
4.1.3. USE OF TRIGGER

Your shotgun is equipped with a single trigger. This trigger allows the shooting of both barrels. Users can choose the barrel firing sequence by means of the selector. The trigger will fire the first barrel according to the selected order. The system directs the trigger to the non-dropping hammer with the resulting impact. When you pull the trigger for the second time, the barrel will be fired.

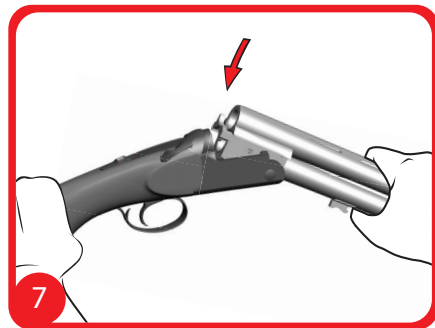
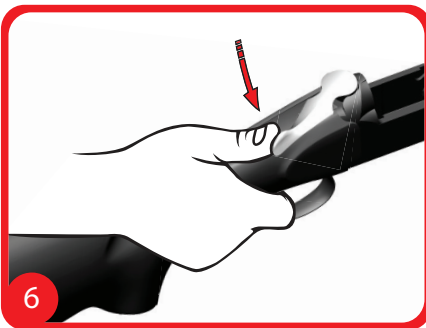
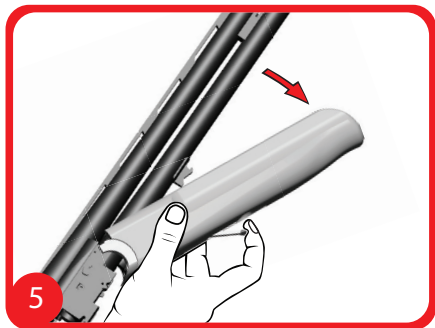
4.2. ASSEMBLY OF THE SHOTGUN

Sarsilmaz over and under shotguns are sent from the factory as disassembled.

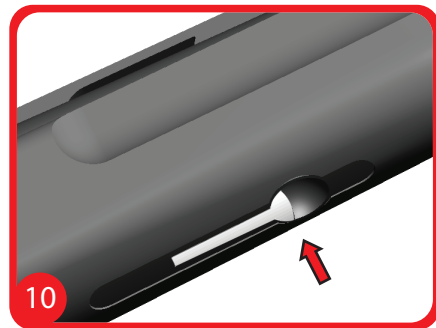
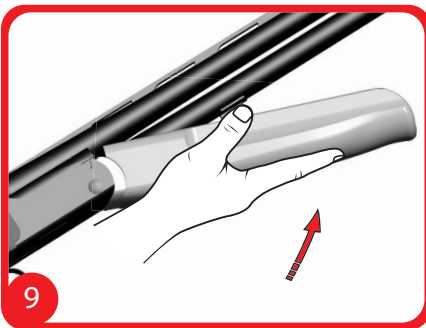
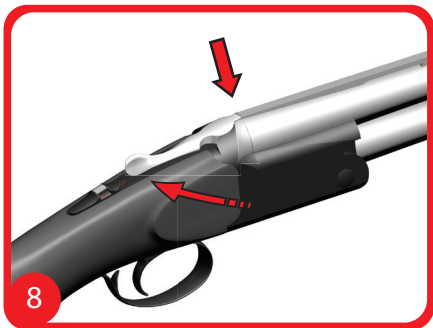
You can find the barrel + fore-end assembly and receiver + stock assembly inside the product packaging. You can perform the assembly of your shotgun by following the steps below: **(Figure 4)**



- a. Detach the fore-end from the barrel by pulling the fore-end iron opening latch. (Figure 5)
- b. Turn the opening latch on the receiver to complete right position. (Figure 6)
- c. Mount the barrel on the receiver slowly in a way that reel pin bearings on the barrel fit on the reel pins. (Figure 7)



- d. d) When the barrel fits on the receiver slot completely, opening latch will come to a straight position. A snapping sound is heard during this operation. **(Figure 8)**
- e. e. Insert the fore-end to the receiver's edge as indicated in the figure and push towards the barrel in arrow direction. **(Figure 9)**
- f. f. When the fore-end fits to its place completely, fore-end iron opening latch is locked to the barrel. Alignment of fore-end iron opening latch with the fore-end indicates that the operation is completed correctly. **(Figure 10)**
- g. g. Assembly of your shotgun is completed. You can open/close your shotgun by turning the opening latch to right position.



4.3. CHECKING THE SHOTGUN

Turn the opening latch to the right side. Open the shotgun by pressing down the barrel. Check the inner parts by exposing the barrels to the light. Make sure there is not any foreign material or clogging inside the barrels. (Figure 11)

4.4. AMMUNITION

- Only use original and high-quality cartridges.
- Only use cartridges, which are suitable to the calibre of your shotgun. (Don't use cartridges, the height of which is 76mm, with a gun, chamber of which is 70cm.)
- Don't forget that guns, which are filled manually or used with other non-standard cartridges will be outside the scope of warranty.

4.5. FIRING

4.5.1. CONTROLS AND SAFETY BEFORE SHOOTING

- Always aim the shotgun at a non-dangerous direction.
- When you take the shotgun in your hand, keep your finger not on the trigger, but on the trigger guard.
- Check and make sure that there is not any foreign material inside the barrel.
- If any, remove the excessive oil inside the gun.
- Loading and unloading the shotgun in a car, inside a building or similar narrow and closed areas (except shooting galleries) must strictly be avoided.
- Do not rely on the safety systems. They can't substitute for using the shotgun carefully and well-informed.

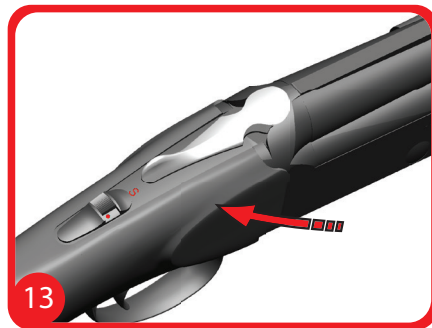
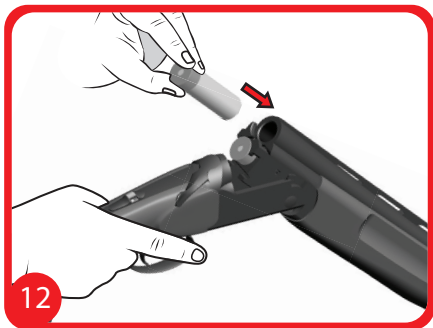


⚠ WARNING

- A foreign body inside the barrel might cause the barrel to swell or any other damages inside the shotgun, and lead to the injury of the person who fires the gun or other people. Make sure that other persons who are next to you during shooting are located at a safe area so that they are not harmed in any way.
- Always use earphones and helmets during shooting in order protect your ears and eyes. Warn the people near you about this subject.
- Strictly avoid trying to remove the cartridge or a foreign object, which is stuck inside the barrel, by firing a second cartridge.
- Keep the shotgun aimed at the target until all your shoots are complete.
- It is solely under the responsibility of the person who uses the shotgun to check the chamber after shooting.

4.5.2. LOADING AND INSTALLING THE SHOTGUN AND ESTABLISHING A BORESIGHT

- Insert the magazines to barrel magazine rests as indicated in the figure. (Figure 12)
- Close the barrel. You will see that opening latch comes to a straight position. This indicates that barrel is closed correctly and the gun is set. Shooting with a shotgun, barrel of which is not closed completely, is dangerous both for you and your shotgun. (Figure 13)



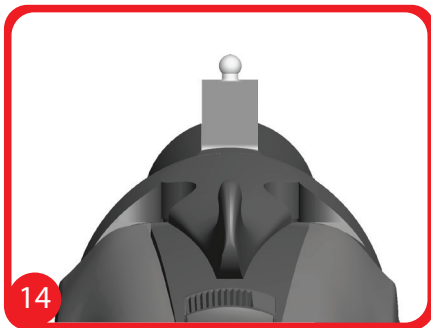
- c. The target line is established by aligning upper strip direction and front sight. **(Figure 14)**

⚠ WARNING

Your shotgun is now loaded and ready for shooting. Don't pull the trigger before taking the safety precautions even if your shotgun is not loaded.

4.5.3. FIRING

- a. Bring the safety latch to shooting position. You can choose the firing sequence of the barrels by means of the selector. **(See Use of Selector)**
- b. Aim the rifle at the target.
- c. Put your finger on the trigger and pull it slowly.
- d. Release the trigger completely after the first shot and set the hammer for the next shot.
- e. Pull the trigger for the second time so that other barrel is fired.
- f. The shooting is complete and your shotgun must be reloaded.



4.5.4. UNLOADING THE SHOTGUN

Follow the steps below in order to remove the magazines, which are exploded after the shooting.

- Aim the gun at a direction and bring it to the safety position. **(See Safety Use)**
- Turn the opening latch to the right side and open your shotgun.
- Empty magazines will be ejected from the magazine rests thanks to the ejector system in your shotgun. If there is any unfired barrel, magazine in this barrel will not be ejected. Be careful about not harming yourself or people around you when ejecting the empty magazines. **(Figure 15)**



Follow the steps below in order to remove the full magazines before shooting.

- a. Direct your shotgun to a safe direction and bring it to the safety position.
- b. Open your shotgun by turning the opening latch to the right side.
- c. Take the full magazines from the barrel with your hand.

⚠ WARNING

Takes safety precautions when unloading your gun. Make sure that there is nor person or object in the direction of the barrel.

4.6. SECURING THE SHOTGUN

4.6.1. RELEASING THE HAMMERS

You set your shotgun each time you open/close it. If you will not shoot, we don't recommend keeping the shotgun in set state for a long time. Since this might cause the springs to remain in strained position, the springs might become deformed in a short period of time. We recommend you to apply the method explained above in order not to keep your shotgun in set position.

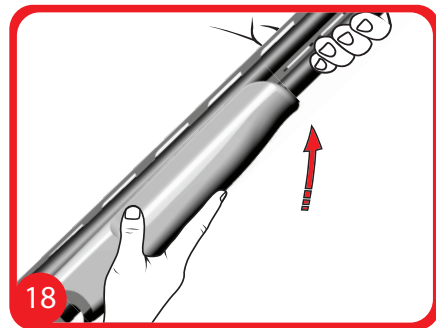
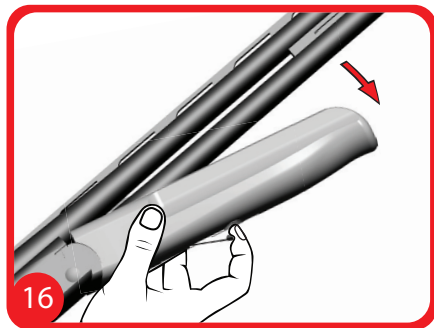
Place an empty magazine in both barrels when closing your shotgun. Pull the trigger slowly so that both hammers drop. After this operation, the shotgun is released from the set position.

Always keep your shotgun empty and unset unless otherwise is required. Make sure that the trigger is not dropped when the shotgun is empty. Dropping the trigger in vain might damage the needles.

5. MAINTENANCE AND CLEANING

5.1. DISASSEMBLING THE SHOTGUN

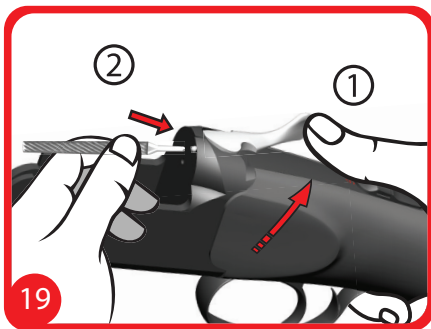
- a. Detach the fore-end from the barrel by pulling the fore-end iron opening latch. **(Figure 16)**
- b. Turn the opening latch on the receiver to complete right position. Press down the barrel and detach it from the receiver. **(Figure 17)**
- c. Insert the fore-end by pressing to the barrel. Fore-end iron opening latch will be locked to the barrel. **(Figure 18)**



- d. Opening latch must be on the right side. If you will put the rifle inside its box, we recommend you to bring the opening latch to straight position. for this, press the opening latch to the right side and push the barrel lock pin backwards with a hard object as indicated in the figure. **(Figure 19)**
- e. Your shotgun is now disassembled. Don't forget to perform the necessary cleaning and maintenance operations before putting it in its box.

⚠ WARNING

FURTHER DISASSEMBLY OF THE SHOTGUN IS NOT RECOMMENDED. THIS PROCEDURE MUST BE PERFORMED BY AN AUTHORIZED SERVICE.



5.2. MAINTENANCE AND CLEANING OF THE SHOTGUN

It is very important to be well-informed on the maintenance and cleaning of the shotgun. It is essential to attach particular importance to cleaning, lubricating and protection of the shotgun. These operations determine whether the shotgun will function appropriately when you need it. Performing regular maintenance operations on your shotgun will ensure long use life and safe performance levels.

- a. Disassemble your shotgun.
- b. Clean the dust, contamination and combustion residues (gunshot residues) that form on the internal and external parts of your shotgun. Cleaning operation must be performed with a cotton cloth or a soft brush lubricated with gun oil. Don't use corrosive and metal objects for cleaning.
- c. Wipe off the dirty oil on the parts with a dry cloth.
- d. Lubricate the metal parts in order to form a thin oil layer with a cotton cloth, on which gun oil is spilled. Too much lubrication leads to quick contamination. Pay attention to this fact.
- e. Clean the inner parts of the barrel with a cleaning rod. Clean the inner parts of the barrel and magazine rests by means of a cotton cloth lubricated with gun oil until combustion residues are eliminated. Wipe off the dirty oil inside the barrel with a dry cloth. After this lubricate the inner and outer parts of the barrel with a cotton cloth lubricated with gun oil. If your shotgun is an internal shock model, make sure that shocks are fitted to the barrel when cleaning the inside of the barrel. Pushing the dirt inside the barrel to the shock gears will break down the shock gears. This leads to snagging problems in the shocks. Lubricate the inner parts of the barrel sufficiently. Too much oil causes quick contamination and clogging inside the barrel.

WARNING

Strictly avoid using vegetable oil or animal oil for the maintenance and cleaning of the shotgun. Only use gun oil.

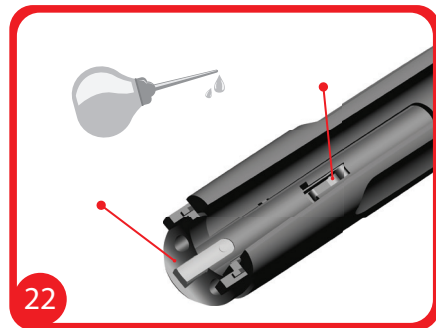
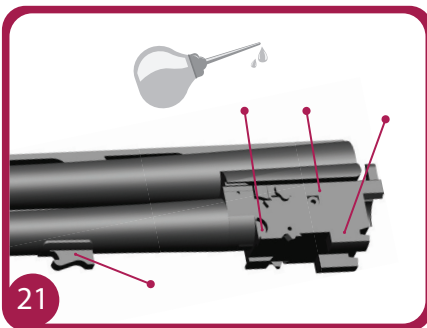
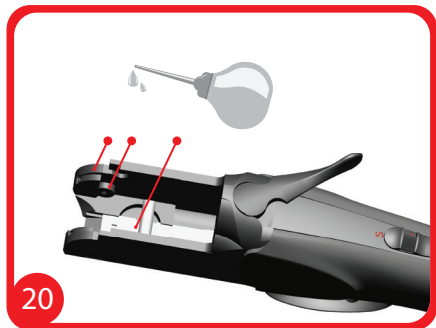
- f. On the receiver, lubricate the reel pins, set rod and fore-end operating surface. (Figure 20)
- g. On the barrel, lubricate the reel pin slots, ejectors, fore-end support and side surfaces of the coating. (Figure 21)
- h. On the fore-end, lubricate the fore-end iron opening latch and fore-end iron receiver operation surface. (Figure 22)
- i. Keep your shotgun in its own bag. Do not store in humid environments.
- j. Cleaning and lubricating a firearm is the best guarantee for protecting the shotgun against corrosion, which forms on respective parts as a result of combustion. Maintenance of SARSILMAZ shotguns are not difficult because of their simplicity and quality of material.

5.3. ASSEMBLING THE SHOTGUN

You can reassemble your shotgun following the instructions in ASSEMBLY OF THE SHOTGUN.

5.4. FUNCTION CONTROL

You can open-close your shotgun by turning the opening latch to the right side. If your shotgun can perform this operation easily, that means that assembly process is completed successfully.



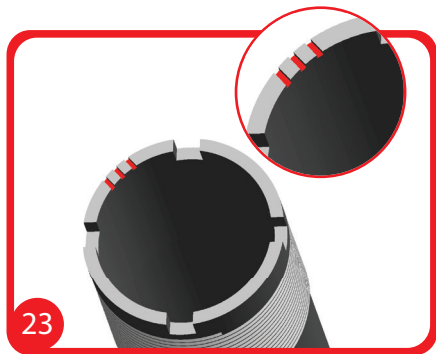
6. ASSEMBLY OF ADDITIONAL EQUIPMENT

6.1. INTENDED USE OF CHOKES

Chokes are intended for shotgun's firing shots to the required distance in an integrated manner. You can change the chokes according to the type of prey you'd like to hunt. Using wrong chokes types might damage the barrel.

△ WARNING: Use the single bullet (dum-dum bullet) cartridges with barrels (*****) which are equipped with chokes. If single bullet cartridge is used with barrels, which are equipped with other types of chokes, you can damage both yourself and your shotgun. Before firing your shotgun with steel shot cartridges, make sure that chokes are marked with 'steel shot.' Otherwise, you might damage your shotgun and the chokes.

Look at the notches on the side to identify the chokes in the barrel. The number of stars indicates the number of notches choke. (Figure 23)



CHOKE MARK	CHOKE DEFINITION	AREA OF USE
★	F (Full)	It is used in long-range hunts. It is used with water preys such as duck and goose.
★★	IM (Improved Modified)	It is used in long-range hunts such as partridge, rabbit etc.
★★★	M (Modified)	It is used in long-range hunts such as partridge, pheasant, woodcock, quail etc.
★★★★	IC (Improved cylinder)	It is used with short range preys such as quail, golden oriole, turtle dove etc.
★★★★★	Cylinder	It is used in very short range preys For shooting in large preys.

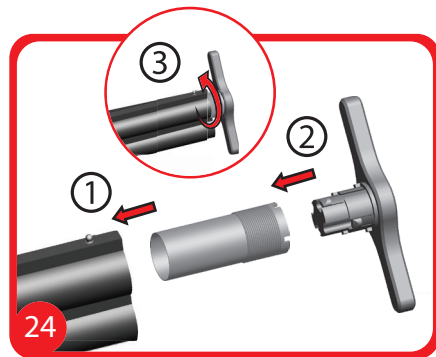
6.2. INSTALLATION AND REMOVAL OF CHOKES

Fit and remove the chokes when the shotgun is unloaded. Break shotgun and check the magazine rests in order to make sure that your shotgun is empty. Chokes must be fitted when the choke is empty. Use the choke switch when inserting and removing the choke from the barrel. When inserting the chokes to the barrels, tighten it so that there is no gap until the rubber seal on the barrel. (Figure 24)

△ WARNING: Don't fire your shotgun before inserting the internal chokes. Otherwise, choke gears of the barrel break down and become dismountable.

6.3. CLEANING AND LUBRICATING THE CHOKE

- a. Disconnect the choke from the barrel.
- b. Clean the internal and external parts by means of a cloth, on which gun oil is spilled.
- c. Before fitting the choke to the barrel, lubricate the gear sections of the choke and choke gears on the barrel edge thoroughly in a way that a thin layer of oil forms.



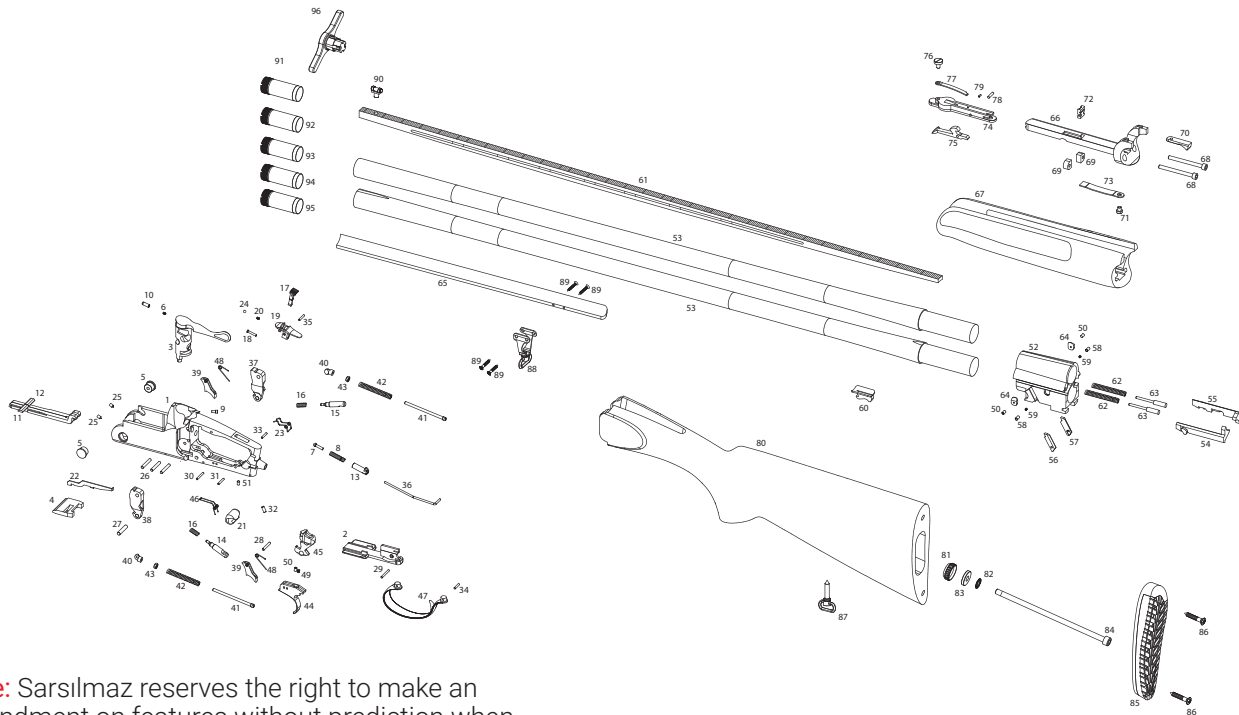
7. TROUBLESHOOTING

Malfunction in firing the shotgun or operational failures stem from incorrect maintenance or wrong ammunition. wrong use or wrong ammunition.

The following table to shoot the problems, causes, and includes suggestions.

PROBLEM	CAUSE	CORRECTION
Trigger can't be pulled	Trigger can't pull down the hammer due to unsupported shooting.	The trigger is passed to the other hammer by means of the selector.
	Hand safety is in close position.	Bring the hand safety to the shooting position.
Magazine doesn't explode	Wrong magazine	Remove the magazine in the barrel and put a new magazine in the barrel.
The shotgun doesn't function	Wrong assembly of the shotgun, which is disassembled for maintenance.	Disassemble your shotgun and perform the assembly operation in accordance with the instructions in the use manual.

8. OVER & UNDER EXPLODED WIEV



Note: Sarsilmaz reserves the right to make an amendment on features without prediction when it is needed .

PART LIST

NUMBER	PART NAME	NUMBER	PART NAME	NUMBER	PART NAME
1	RECEIVER ASSEMBLY	33	SEAR SPRING PIN	65	REAR RIB
2	COVER PLATE	34	TRIGGER GUARD RETAINING PIN	66	FOREND IRON
3	TOP LEVER SPRING	35	SEAR PIN	67	FOREND
4	LOCK RETAINER	36	AUTO SAFETY ROD	68	FOREND IRON SCREW
5	PIVOT RETAINER SCREW	37	HAMMER, BOTTOM	69	FOREND IRON RETAINING CLAMP
6	TOP LEVER LOCK SPRING	38	HAMMER, TOP	70	COCKING ROD CAM
7	TOP LEVER SPRING SUPPORT	39	SEAR	71	COCKING ROD CAM SCREW
8	TOP LEVER	40	MAINSRING GUIDE HEAD	72	FOREND RETAINING PIECE
9	LOCK RETAINER PIN	41	MAINSRING GUIDE	73	FOREND RETAINING SPRING
10	TOP LEVER LOCK SPRING PLUNGER	42	MAINSRING	74	DELEY CATCH FRAME
11	COCKING ROD, LEFT	43	MAINSRING GUIDE	75	DELEY CATCH
12	COCKING ROD, RIGHT	44	TRIGGER	76	FOREND CATCH SCREW
13	TOP LEVER SPRING PLUNGER	45	INERTIA BLOCK	77	DELEY CATCH SPRING
14	FIRING PIN, TOP	46	INERTIA BLOCK SPRING	78	CATCH RETAINING PIN
15	FIRING PIN, BOTTOM	47	TRIGGER GUARD	79	CATCH RETAINING PIN
16	FIRING PIN SPRING	48	SEAR SPRING	80	STOCK
17	SELECTOR	49	TRIGGER SPRING	81	STOCK BOLT WASHER
18	SELECTOR RETAINING PIN	50	TRIGGER ADJUSTING SCREW	82	STOCK BOLT LOCK WASHER
19	SELECTOR TRIGGER SAFETY BUTTON	51	TRIGGER ADJUSTING SCREW	83	STOCK MOUNTING NUT
20	SELECTOR SPRING	52	BREECH	84	STOCK BOLT
21	MAINSRING GUIDE PLATE BEARING	53	BARREL ASSEMBLY	85	BUTTPLATE
22	INERTIA SAFETY LEVER	54	EJECTOR, TOP	86	BUTTPLATE SCREW
23	SEAR SPRING	55	EJECTOR, BOTTOM	87	STOCK SWIVEL
24	SELECTOR SPRING PLUNGER	56	EJECTOR TRIP, TOP	88	BARREL SWIVEL
25	PIVOT	57	EJECTOR TRIP, BOTTOM	89	BARREL SWIVEL SCREW
26	TOP LEVER RETAINING PIN	58	EJECTOR TRIP STOPPER PIN	90	FRONT SIGHT
27	HAMMER RETAINING PIN	59	EJECTOR TRIP STOPPER PIN SPRING	91	CHOKE TUBE, FULL
28	SEAR PIN	60	FOREND SUPPORT PIECE	92	CHOKE TUBE, IMPROVED MODIFIED
29	COVER PLATE RETAINING PIN	61	BOTTOM RIB	93	CHOKE TUBE, MODIFIED
30	TRIGGER RETAINING PIN	62	EJECTOR SPRING	94	CHOKE TUBE, IMPROVED CYLINDER
31	INERTIA BLOCK SPRING PIN	63	EJECTOR PLUNGER	95	CHOKE TUBE, CYLINDER
32	MAINSRING GUIDE PLATE BEARING PIN	64	EJECTOR TRIP STOPPER	96	CHOKE TUBE WRENCH

9. ASPECTS WHICH WILL BE CONSIDERE OUTSIDE THE SCOPE OF WARRANTY

1. Apply the rules specified in the use manual to you shotgun. Avoid violating these rules.
2. During hunting, make sure that muzzle is not obstructed. Otherwise, damages which stem from incorrect use may occur on your shotgun. (The swelling stems from firing the gun when the "shock area" is obstructed.)
3. Don't install indented shocks on your shotgun. Don't leave the shock in a slack position. Fit it into its slot properly.
4. Don't keep the fore-end part of wooden fore-end motels we or in a wet area. Clean the wooden part of your shotgun after shooting under rainy weather conditions. Protect your shotgun against shocks and impacts.
5. Don't leave the external surface of your gun wet or humid and avoid using chemical materials for cleaning. Damaged oil might cause oxidation or paint removal.
6. If you will not use your gun for a long period of time, remove the shock and put it in the storage box.
7. Only use factory filled, industrial type, newly manufactured magazines. Make sure that each magazine you use is in accordance with the calibre and type of the gun. Strictly avoid using rechargeable magazines.
8. Shoot the single bullet magazines with cylinder shock barrels. Don't use steel shot magazines.
9. For shotgun with shocks, don't use the barrel when it is not equipped with the shock.
10. Don't use vegetable or animal oil for the maintenance of your shotgun.

⚠ WARNING

PLEASE FOLLOW THE RULES STATED ABOVE. IF NOT FOLLOWED AND THERE IS A FAILURE, THE SHOTGUN WARRANTY WILL BE VOID. PLEASE FOLLOW THE RULES STATED ABOVE. IF NOT FOLLOWED AND THERE IS A FAILURE, THE SHOTGUN WARRANTY WILL BE VOID.

NOTE:

NOTE:

1-877-SAR-GUNS
1-877-727- 4867
www.sarusa.com